

PERSONNEL _____ REFERENCE NO. 1 SHEET 1 OF 39

NOTES RHOADES TDN DATE ~~6/11/13~~ 9/10/24 ROUTE SR 224

H.C. ROUSOS WEATHER CLOUDY CLEAR COUNTY SENECA

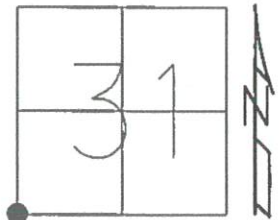
R.C. WESTFALL TEMP. ~~66°~~ 54° TOWNSHIP LOUDON

GPS TDN SECTION 31

LSPC T 2 N R 13 E

TYPE MONUMENT R.R. SPIKE MAG/WASHER
~~ON SURFACE~~ - ~~BELOW~~ 10" ON
 LEFT - C PAV'T - RIGHT ON ✓
- TO - EDGE PAVEMENT
 S.L.M. 0+00

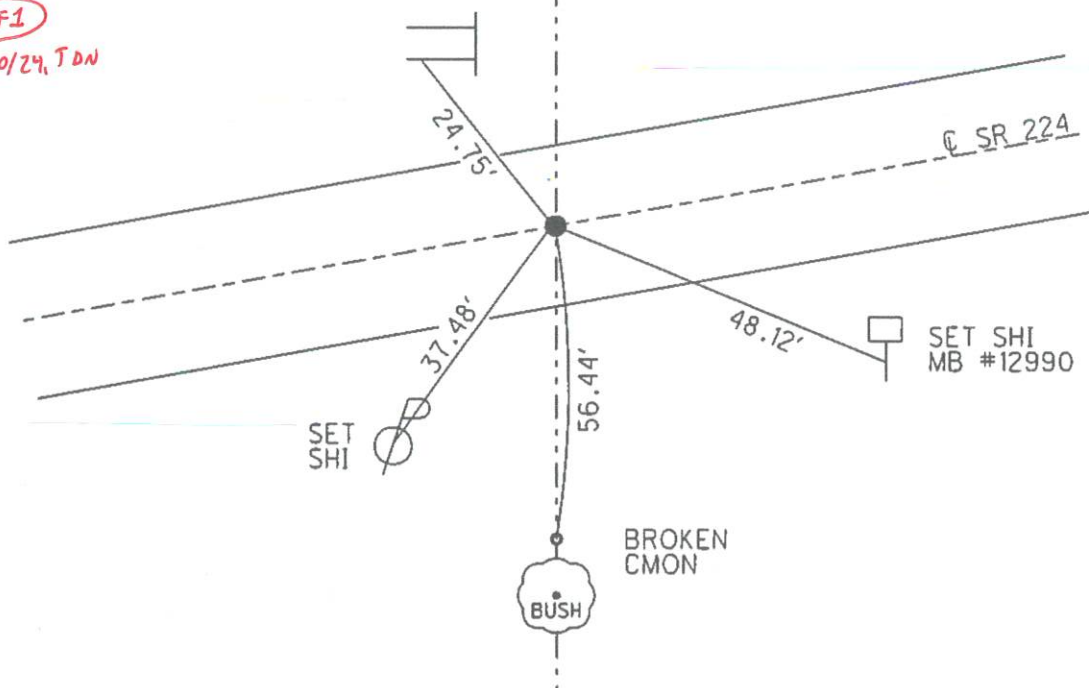
Grid: Northing: 516064.480 Easting: 1714625.122



REF1
9/10/24, TDN

2' UP
CO.LINE
SIGN POST

HANCOCK CO.
SENECA CO.



O.D.O.T. DISTRICT 2 SURVEY OFFICE (USE ONLY)

PERSONNEL

REFERENCE NO. 2

SHEET 2 OF 39

NOTES RHOADES TON
H.C. ROUSOS TON
R.C. WESTFALL LSPC
GPS TON

DATE 6/11/13 9/10/24
WEATHER CLOUDY CLEAR
TEMP. 66° 54°

ROUTE SR 224
COUNTY SENECA
TOWNSHIP LOUDON
SECTION 31
T 2 N R 13 E

TYPE MONUMENT P.K./WASHER MAG SHANK

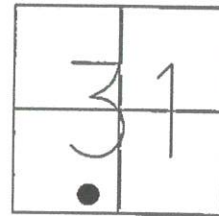
~~ON SURFACE~~ - ~~BELOW~~ 4" ON

LEFT - Q PAV'T - ~~RIGHT~~ 0.6' ✓

- TO - EDGE PAVEMENT

S.L.M. 20+01.44

Grid: Northing: 516424.377 Easting: 1716593.993

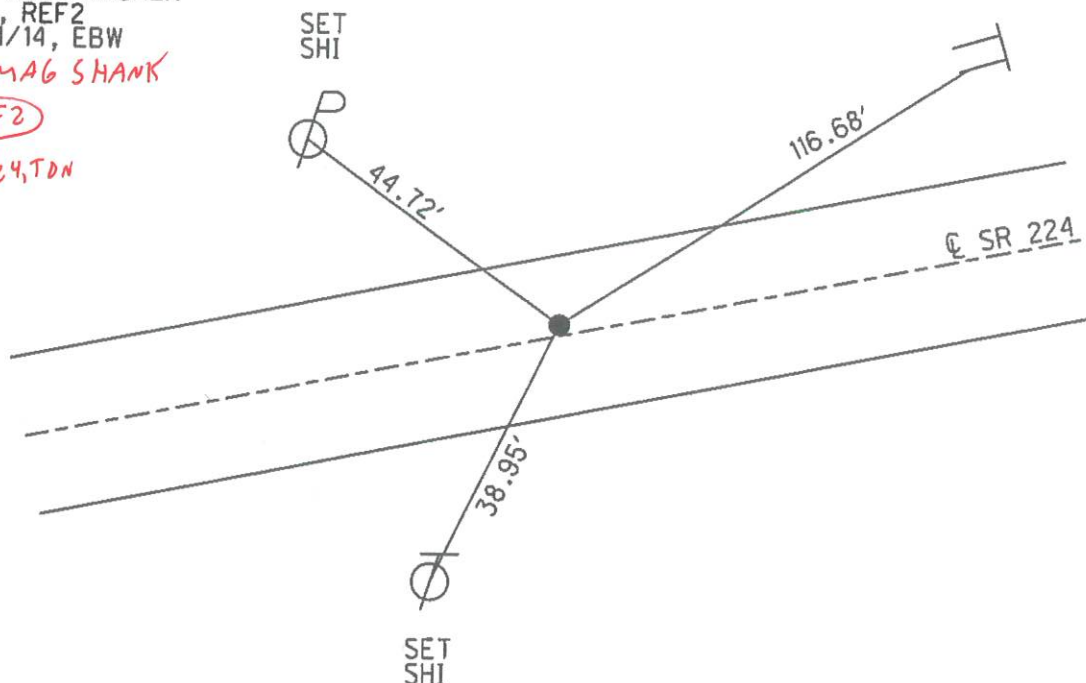


RECORD: P.O.T.
FD R.R. SPIKE
11/26/63, EK
2/10/12, DCH
GPS, REF2

SET MAG/WASHER
GPS, REF2
5/21/14, EBW
FD MAG SHANK

REF2

9/10/24, TON

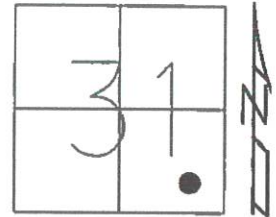


O.D.O.T. DISTRICT 2 SURVEY OFFICE (USE ONLY)

PERSONNEL _____ REFERENCE NO. 3 SHEET 3 OF 39
 NOTES RHOADES TDN DATE 6/11/13 9/10/24 ROUTE SR 224
 H.C. ROUSOS TDN WEATHER CLOUDY CLEAR COUNTY SENECA
 R.C. WESTFALL LSPL TEMP. 66° 54° TOWNSHIP LOUDON
 SECTION 31
 T 2 N R 13 E

TYPE MONUMENT MAG/WASHER ✓
 ON SURFACE - ~~BELOW~~ ON ✓
 LEFT - Q PAV'T - ~~RIGHT~~ 4.0' ✓
8.5' TO LT EDGE PAVEMENT
 S.L.M. 41+55.84

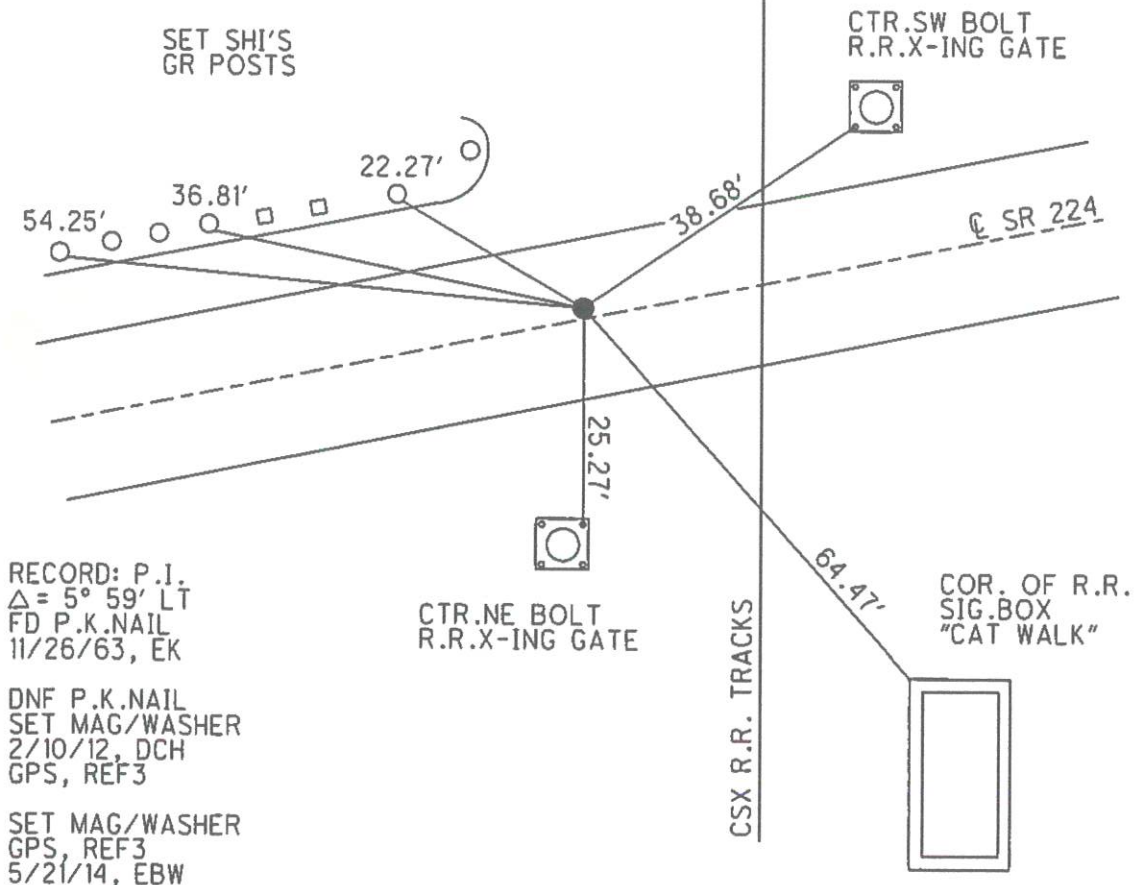
Grid: Northing: 516811.755 Easting: 1718713.262



FD MAG/W

REF 3

9/10/24 TDN



RECORD: P.I.
 $\Delta = 5^\circ 59' \text{ LT}$
 FD P.K.NAIL
 11/26/63, EK

DNF P.K.NAIL
 SET MAG/WASHER
 2/10/12, DCH
 GPS, REF3

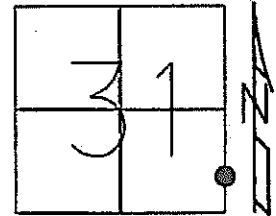
SET MAG/WASHER
 GPS, REF3
 5/21/14, EBW

O.D.O.T. DISTRICT 2 SURVEY OFFICE (USE ONLY)

PERSONNEL	REFERENCE NO.	5	SHEET	4	OF	39
NOTES	RHOADES	DATE	6/11/13	ROUTE	SR 224	
H.C.	ROUSOS	WEATHER	CLOUDY	COUNTY	SENECA	
R.C.	WESTFALL	TEMP.	66°	TOWNSHIP	LOUDON	
				SECTION	31	
				T	2	N
				R	13	E

TYPE MONUMENT P.K./WASHER
 ON SURFACE - ~~BELOW~~ ON
~~LEFT~~ - Q PAV'T - RIGHT 4.5'
TO - EDGE PAVEMENT
 S.L.M. 55+19.91

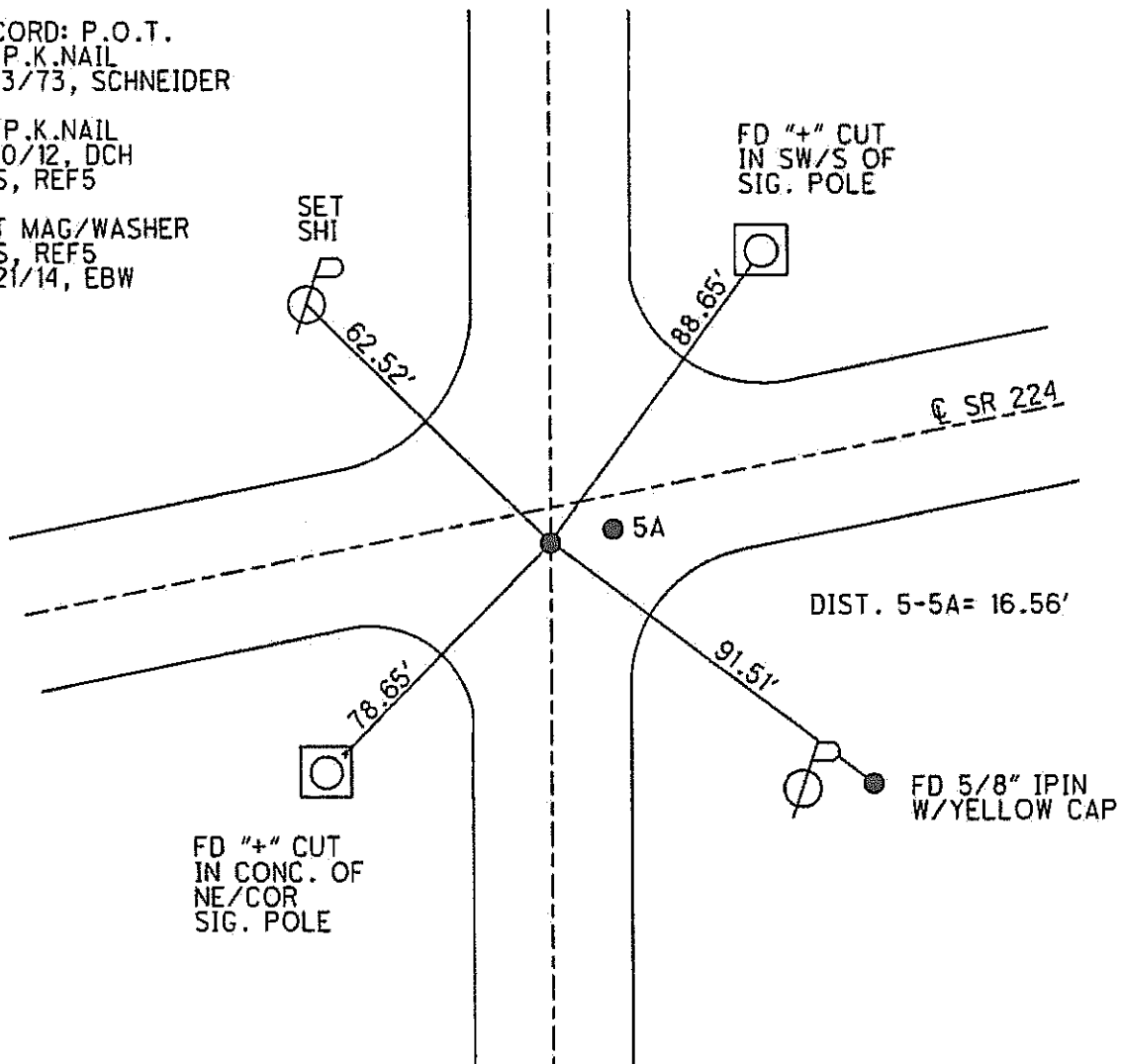
Grid: Northing: 516917.099 Easting: 1720073.236



RECORD: P.O.T.
 FD P.K.NAIL
 3/13/73, SCHNEIDER

FD P.K.NAIL
 2/10/12, DCH
 GPS, REF5

SET MAG/WASHER
 GPS, REF5
 5/21/14, EBW



O.D.O.T. DISTRICT 2 SURVEY OFFICE (USE ONLY)

PERSONNEL

REFERENCE NO. 22

SHEET 2 OF 17

NOTES O'DONNELL

DATE 5/12/21

ROUTE US 23

H.C. AUBLE

WEATHER SUNNY

COUNTY SENECA

R.C. NIESE

TEMP. 43°

TOWNSHIP LOUDON

SECTION 31DWG BY RHOADES

PID 85264

T_2_N R_13_E

TYPE MONUMENT MAG/WASHER

ON SURFACE - ~~BELOW~~ ON

OFFSET @ PAVEMENT ON _____ LT : RT _____

TO - EDGE PAVEMENT 4.5' S OF US 224

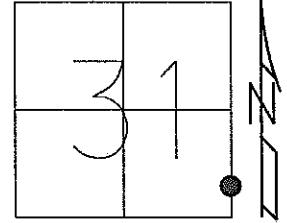
STATION: 352+96.87

HORZ.DATUM: NAD83 2011

GEOID: 2012A

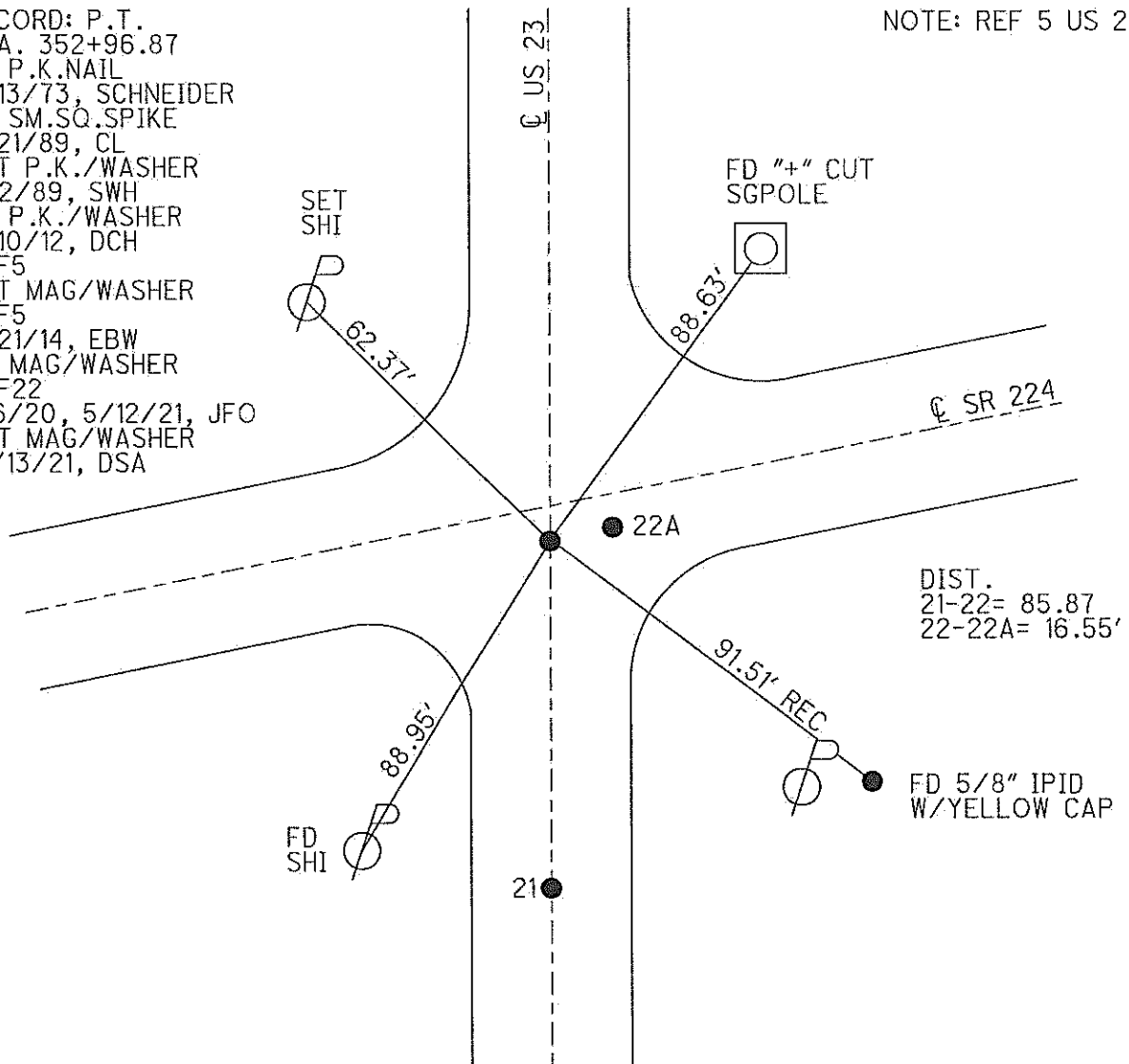
GRID: NORTHING: 516917.104

EASTING: 1720073.295



RECORD: P.T.
STA. 352+96.87
FD P.K.NAIL
3/13/73, SCHNEIDER
FD SM.SQ.SPIKE
7/21/89, CL
SET P.K./WASHER
11/2/89, SWH
FD P.K./WASHER
2/10/12, DCH
REF5
SET MAG/WASHER
REF5
5/21/14, EBW
FD MAG/WASHER
REF22
1/6/20, 5/12/21, JFO
SET MAG/WASHER
12/13/21, DSA

NOTE: REF 5 US 224

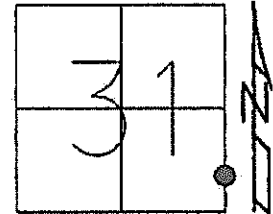


O.D.O.T. DISTRICT 2 SURVEY OFFICE (USE ONLY)

PERSONNEL _____ REFERENCE NO. 5 A SHEET 5 OF 39

NOTES RHOADES DATE 6/11/13 ROUTE SR 224
H.C. ROUSOS WEATHER CLOUDY COUNTY SENECA
R.C. WESTFALL TEMP. 66° TOWNSHIP LOUDON
SECTION 31
T 2 N R 13 E

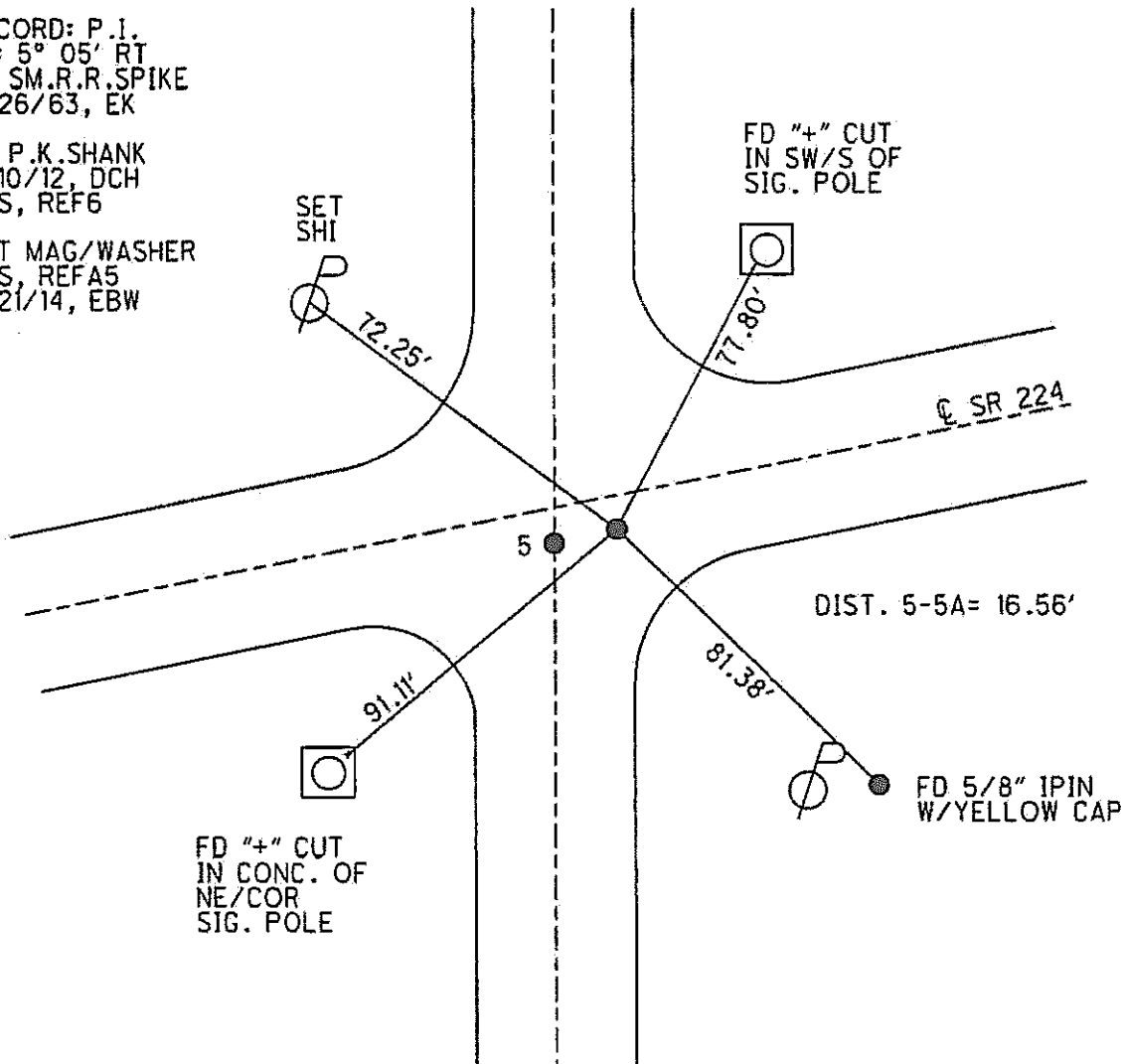
TYPE MONUMENT P.K. SHANK
ON SURFACE - ~~BELOW~~ ON
~~LEFT~~ - Q PAV'T - RIGHT 4.5'
- TO - EDGE PAVEMENT
S.L.M. 55+36.47
Grid: Northing: 516918.324 Easting: 1720089.817



RECORD: P.I.
 $\Delta = 5^\circ 05'$ RT
FD SM.R.R. SPIKE
11/26/63, EK

FD P.K. SHANK
2/10/12, DCH
GPS, REF6

SET MAG/WASHER
GPS, REFA5
5/21/14, EBW



O.D.O.T. DISTRICT 2 SURVEY OFFICE (USE ONLY)

PERSONNEL

REFERENCE NO. 22 A

SHEET 1 OF 17

NOTES O'DONNELL

DATE 5/12/21

ROUTE US 23

H.C. AUBLE

WEATHER SUNNY

COUNTY SENECA

R.C. NIESE

TEMP. 43°

TOWNSHIP LOUDON

SECTION 31

T_2_N R_13_E

DWG BY RHOADES

PID 85264

TYPE MONUMENT MAG/WASHER

ON SURFACE - ~~BELOW~~ ON

OFFSET C PAVEMENT 16.5' ~~17'~~ : RT

____TO____EDGE PAVEMENT

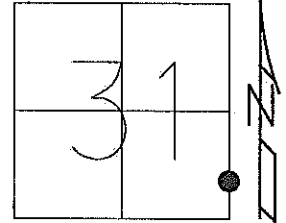
STATION: 352+96.87

HORZ.DATUM: NAD83 2011

GEOID: 2012A

GRID: NORTHING: 516918.349

EASTING: 1720089.797



RECORD: US 224 P.I.

$$\Delta = 5^{\circ} 05' \text{ RT}$$

FD SM.R.R.SPIKE

11/26/63, EK

FD SM.SQ.SPIKE

7/21/89, CL

SET P.K./WASHER

11/2/89, SWH

FD P.K.SHANK

2/10/12, DCH

REF6

SET MAG/WASHER

REF A5

5/21/14, EBW

FD MAG/WASHER

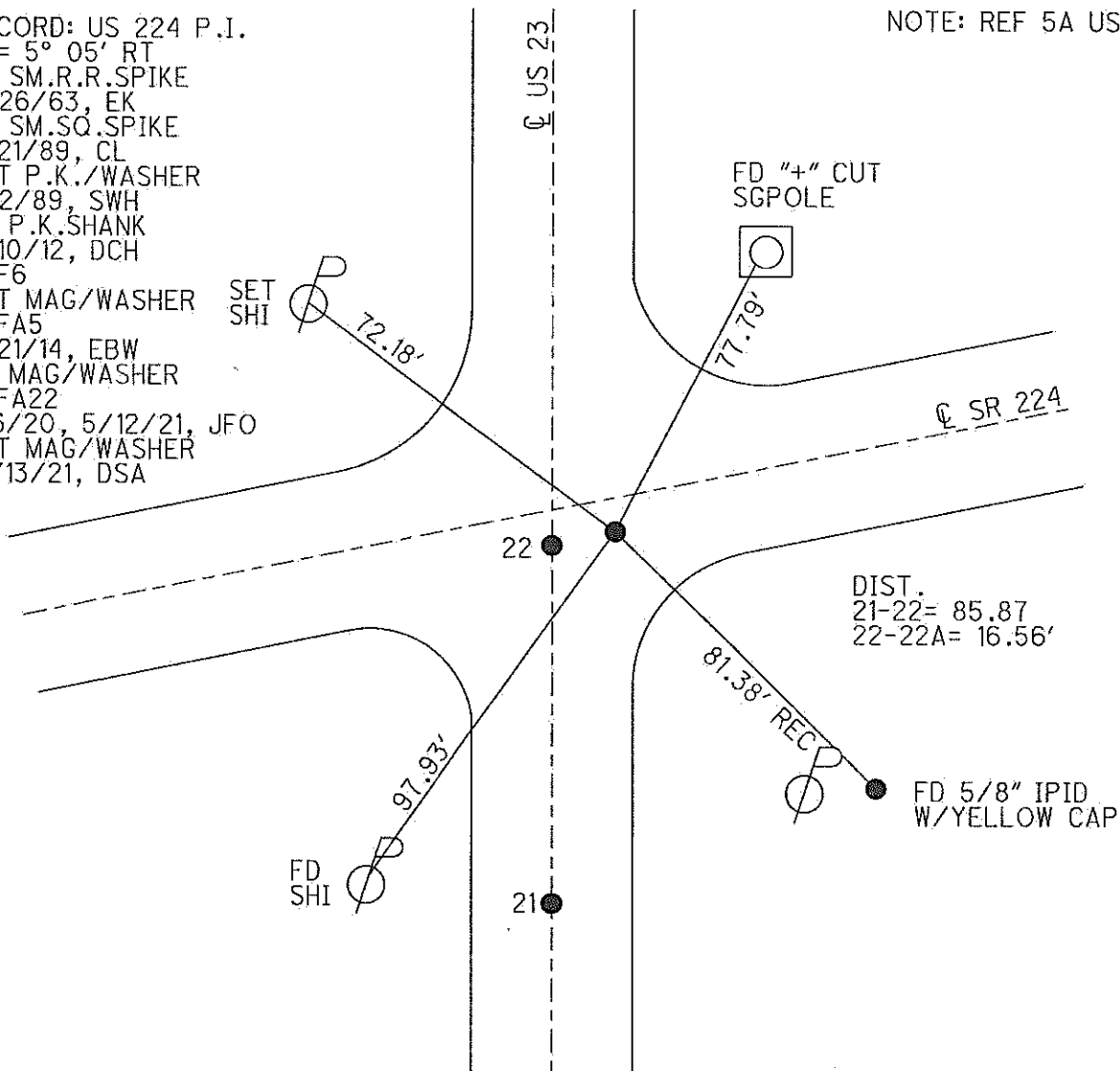
REF A22

1/6/20, 5/12/21, JFO

SET MAG/WASHER

12/13/21, DSA

NOTE: REF 5A US 224

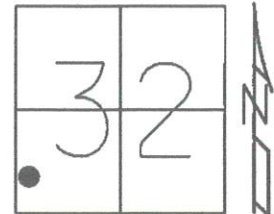


O.D.O.T. DISTRICT 2 SURVEY OFFICE (USE ONLY)

PERSONNEL _____ REFERENCE NO. 6 SHEET 6 OF 39
 NOTES RHOADES TDN DATE 6/11/13 - 9/10/24 ROUTE SR 224
 H.C. ROUSOS TDN WEATHER CLOUDY CLEAR COUNTY SENECA
 R.C. WESTFALL LSPC TEMP. 66° 67° TOWNSHIP LOUDON
 SECTION 32
 T 2 N R 13 E

TYPE MONUMENT P.K. NAIL MAG/W
 ON SURFACE - ~~BELOW~~ ON ✓
 LEFT - 0 PAV'T - RIGHT 0.6'
 - TO - EDGE PAVEMENT
 S.L.M. 58+05.50

Grid: Northing: 516962.420 Easting: 1720355.162

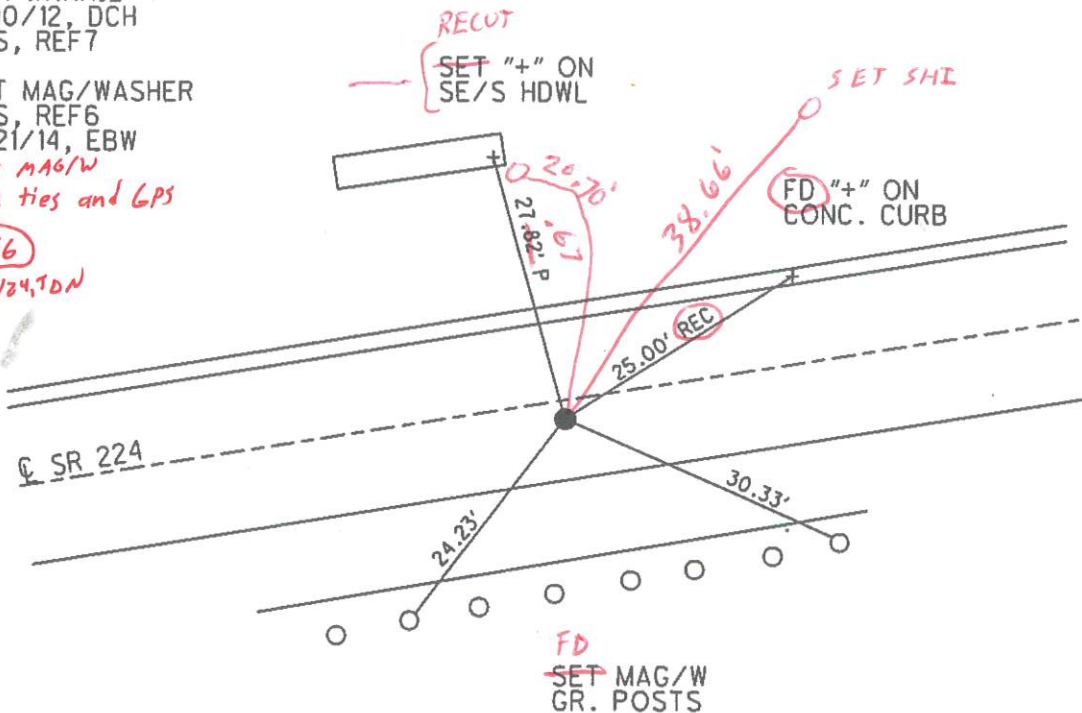


RECORD: P.I.
 FD R.R. SPIKE
 11/26/63, EK

FD P.K. NAIL
 2/10/12, DCH
 GPS, REF7

SET MAG/WASHER
 GPS, REF6
 5/21/14, EBW
 SET MAG/W
 w/2 ties and GPS

REF6
 9/10/24, TDN

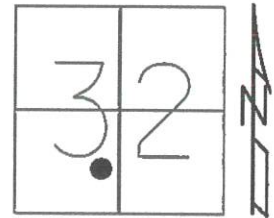


Needs Set

O.D.O.T. DISTRICT 2 SURVEY OFFICE (USE ONLY)

PERSONNEL _____ REFERENCE NO. 7 SHEET 7 OF 39
 NOTES RHOADES TON DATE ~~6/11/13~~ 9/10/24 ROUTE SR 224
 H.C. ROUSOS WEATHER ~~CLOUDY~~ CLEAR COUNTY SENECA
 R.C. WESTFALL TEMP. 66°✓ TOWNSHIP LOUDON
GPS TON SECTION 32
LSPC T 2 N R 13 E

TYPE MONUMENT P.K./WASHER MAG NAIL
 ON SURFACE - ~~BELOW~~ ON ✓
 LEFT - Q PAV'T - RIGHT ON 0.5'
 - TO - EDGE PAVEMENT
 S.L.M. 74+46.35



Grid: Northing: 517268.008 Easting: 1721967.307

RECORD: P.I.
 $\Delta = 0^\circ 33' RT$
 STA. 74+46
 FD P.K./WASHER
 3/30/92, CHENEY
 PREVIOUS MON:
 R.R.SPIKE

RES.#11625

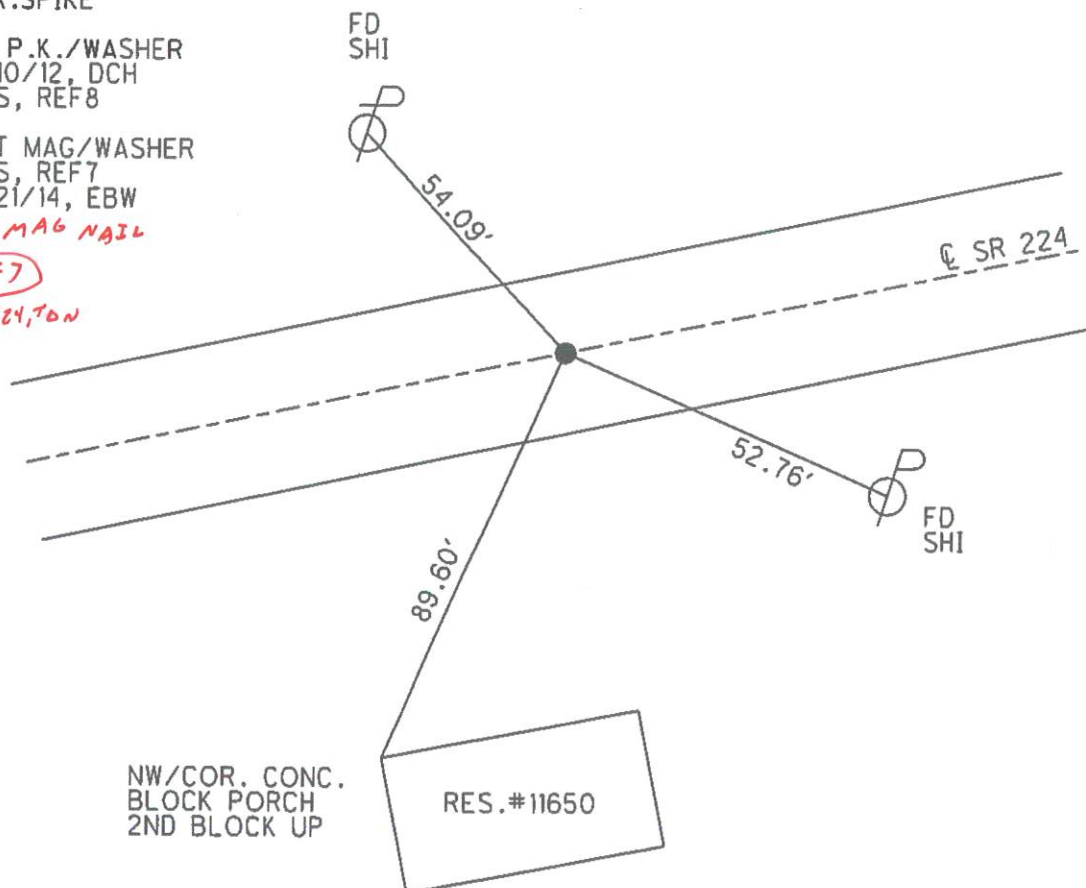
FD P.K./WASHER
 2/10/12, DCH
 GPS, REF8

SET MAG/WASHER
 GPS, REF7
 5/21/14, EBW

FD MAG NAIL

REF7

9/10/24, TON



O.D.O.T. DISTRICT 2 SURVEY OFFICE (USE ONLY)

PERSONNEL

REFERENCE NO. 8

SHEET 8 OF 39

NOTES RHOADES TON

H.C. ROUSOS

R.C. WESTFALL

GPS

TON

LSPC

DATE 6/11/13 9/10/24

WEATHER CLOUDY CLEAR

TEMP. 66° ✓

ROUTE SR 224

COUNTY SENECA

TOWNSHIP LOUDON

SECTION 32

T 2 N R 13 E

TYPE MONUMENT MAG NAIL/WASHER

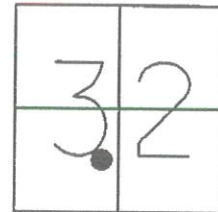
ON SURFACE - BELOW ON ✓

~~LEFT~~ - C PAV'T - RIGHT 1.0' ✓

- TO - EDGE PAVEMENT

S.L.M. 82+15.08

Grid: Northing: 517403.850 Easting: 1722723.938



RECORD:
FD R.R.SPIKE
11/27/63, KRABILL

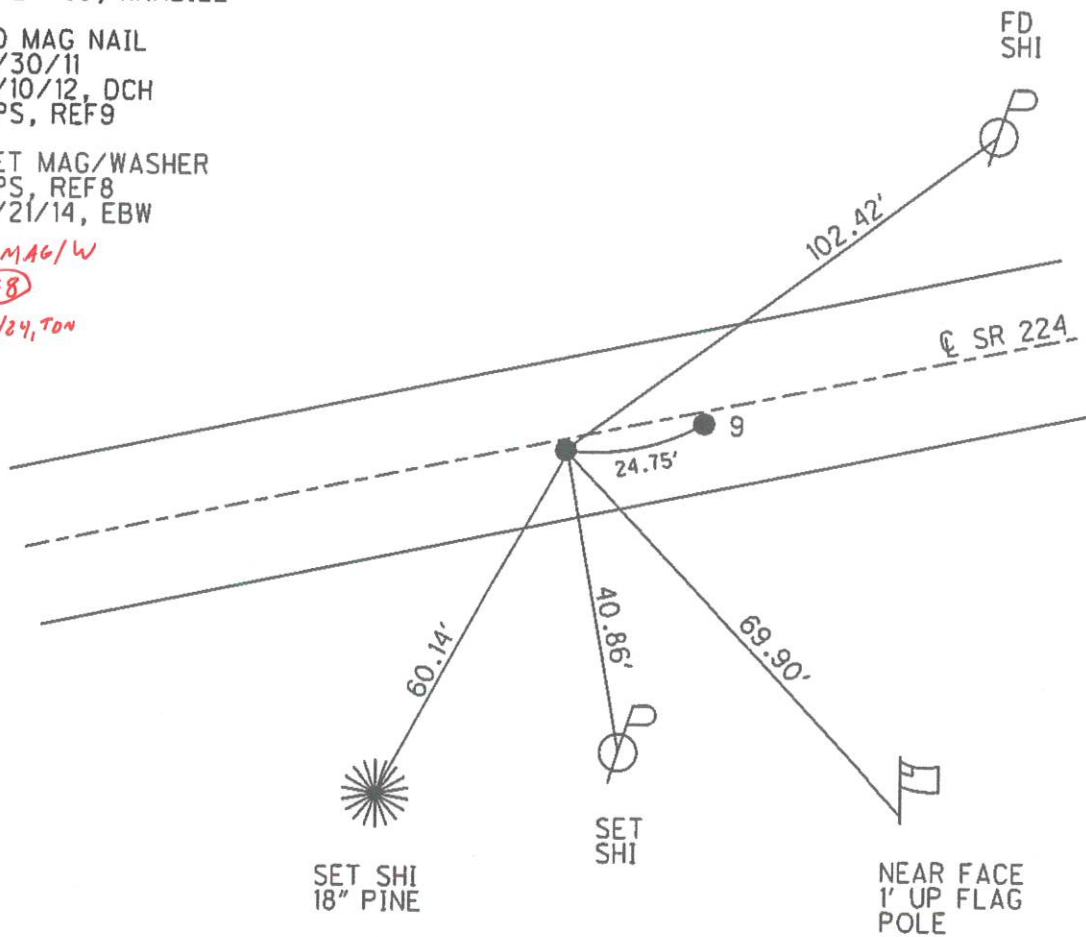
FD MAG NAIL
6/30/11
2/10/12, DCH
GPS, REF9

SET MAG/WASHER
GPS, REF8
5/21/14, EBW

FD MAG/W

REF8

9/10/24, TON



O.D.O.T. DISTRICT 2 SURVEY OFFICE (USE ONLY)

PERSONNEL

REFERENCE NO. 9

SHEET 9 OF 39

NOTES WEST FALL TON

H.C. HOMAN

R.C. THOMAS

GPS

RHOADES TON

LSPC

DATE 6/26/14

WEATHER OVERCAST

TEMP. 70° 66°

ROUTE SR 224

COUNTY SENECA

TOWNSHIP LOUDON

SECTION 32

T 2 N R 13 E

TYPE MONUMENT P.K.NAIL MAG/WASHER

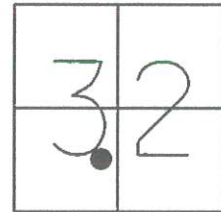
ON SURFACE - BELOW ON ✓

LEFT - Q PAV'T - RIGHT 1.0' ✓

- TO - EDGE PAVEMENT

S.L.M. 82+39.83

Grid: Northing: 517408.221 Easting: 1722748.341



RECORD: P.I.
Δ = 0° 39' LT
11/27/63, KRABILL

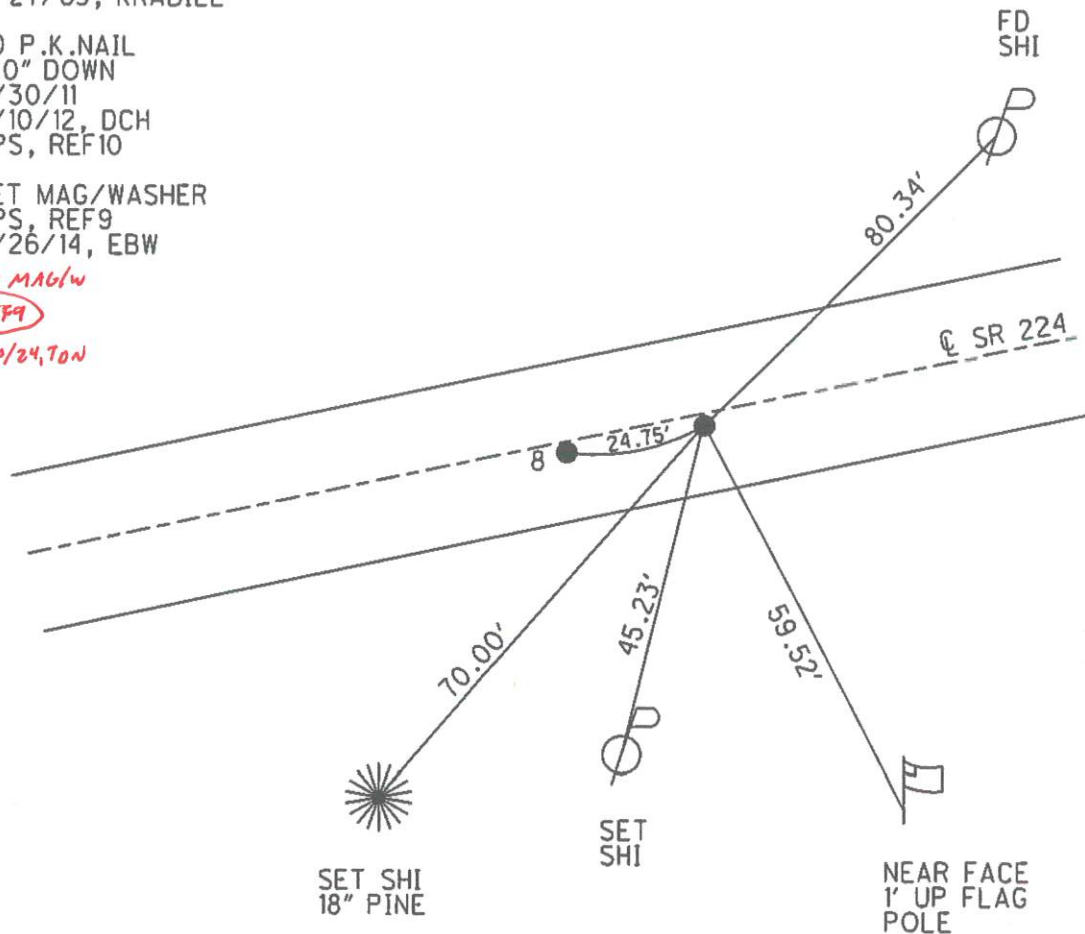
FD P.K.NAIL
3.0" DOWN
6/30/11
2/10/12, DCH
GPS, REF10

SET MAG/WASHER
GPS, REF9
6/26/14, EBW

FD MAG/W

REF9

9/10/24, TON

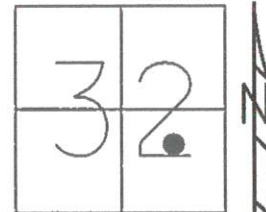


O.D.O.T. DISTRICT 2 SURVEY OFFICE (USE ONLY)

PERSONNEL _____ REFERENCE NO. 10 SHEET 10 OF 39
 NOTES WESTFALL TON DATE ~~6/26/14~~ 9/10/24 ROUTE SR 224
 H.C. HOMAN WEATHER ~~CLEAR~~ OVERCAST COUNTY SENECA
 R.C. THOMAS TEMP. 70° 66° TOWNSHIP LOUDON
GPS LEU TON SECTION 32
RHOADES LSPC T 2 N R 13 E

TYPE MONUMENT MAG/WASHER SHANK
 ON SURFACE - BELOW ON ✓
 LEFT - Q PAV'T - RIGHT - ON
TO - EDGE PAVEMENT
 S.L.M. 93+05.16

Grid: Northing: 517608.014 Easting: 1723794.789



RECORD: P.I.
 $\Delta = 0^{\circ} 08' LT$
 FD R.R.SPIKE
 11/27/63, KRABILL

RES#11285

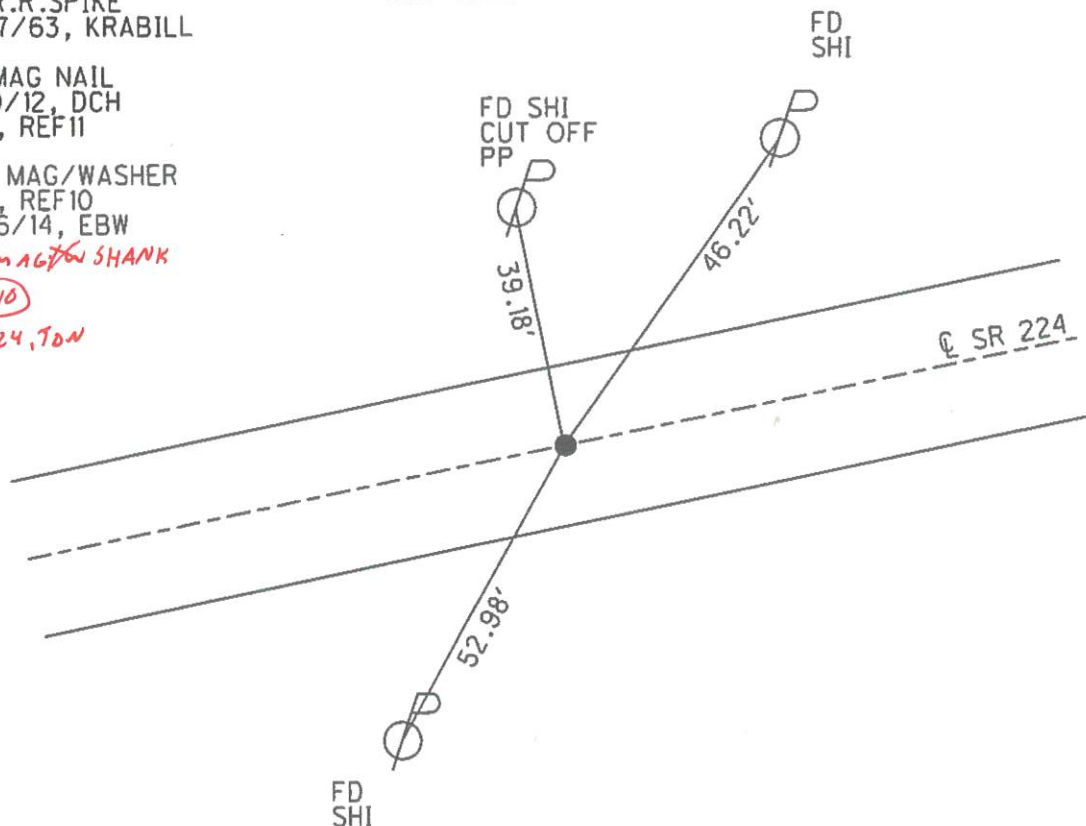
FD MAG NAIL
 2/10/12, DCH
 GPS, REF11

SET MAG/WASHER
 GPS, REF10
 6/26/14, EBW

FD MAG/WASHER SHANK

REF10

9/10/24, TON

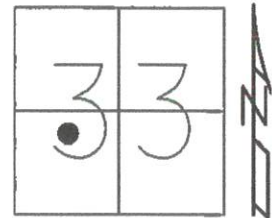


O.D.O.T. DISTRICT 2 SURVEY OFFICE (USE ONLY)

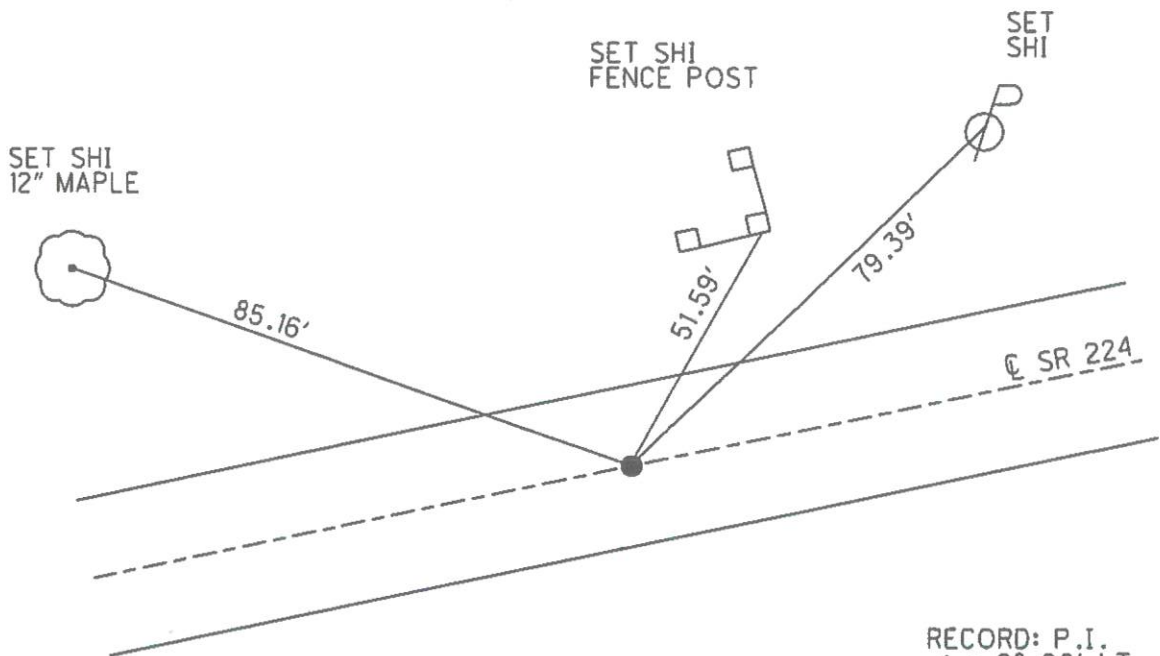
PERSONNEL _____ REFERENCE NO. 11 SHEET 11 OF 39
 NOTES RHOADES TON DATE 6/11/13 9/10/24 ROUTE SR 224
 H.C. ROUSOS WEATHER CLOUDY CLEAR COUNTY SENECA
 R.C. WESTFALL TEMP. 73° 67° TOWNSHIP LOUDON
GPS TON SECTION 33
LSPL T 2 N R 13 E

TYPE MONUMENT P.K.NAIL MAG/W
~~ON SURFACE~~ - BELOW 4" ON
 LEFT - Q PAV'T - RIGHT ON ✓
 - TO - EDGE PAVEMENT
 S.L.M. 114+99.88

Grid: Northing: 518024.402 Easting: 1725949.567



Fb MAG/W
REF 11
9/10/24, TON



RECORD: P.I.
 $\Delta = 0^{\circ} 08' LT$
 FD R.R.SPIKE
 11/27/63, KRABILL

FD P.K. NAIL
 2/10/12, DCH
 GPS, REF 12

SET MAG/WASHER
 GPS, REF 11
 5/21/14, EBW

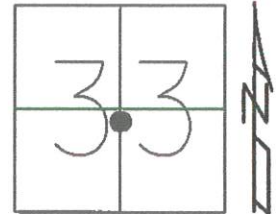
O.D.O.T. DISTRICT 2 SURVEY OFFICE (USE ONLY)

PERSONNEL _____ REFERENCE NO. 12 SHEET 12 OF 39

NOTES RHOADES TON DATE 6/26/14 9/10/24 ROUTE SR 224
H.C. HOMAN WEATHER LEAR OVERCAST COUNTY SENECA
R.C. LEU TEMP. 70° TOWNSHIP LOUDON
GPS THOMAS TON SECTION 33
MEYER LSPC T 2 N R 13 E

TYPE MONUMENT P.K. SHANK MAG/W
~~ON SURFACE~~ - BELOW 3" ON
~~LEFT~~ - C PAV'T - RIGHT 0.4' ✓
TO - EDGE PAVEMENT
S.L.M. 126+32.53

Grid: Northing: 518242.340 Easting: 1727061.064

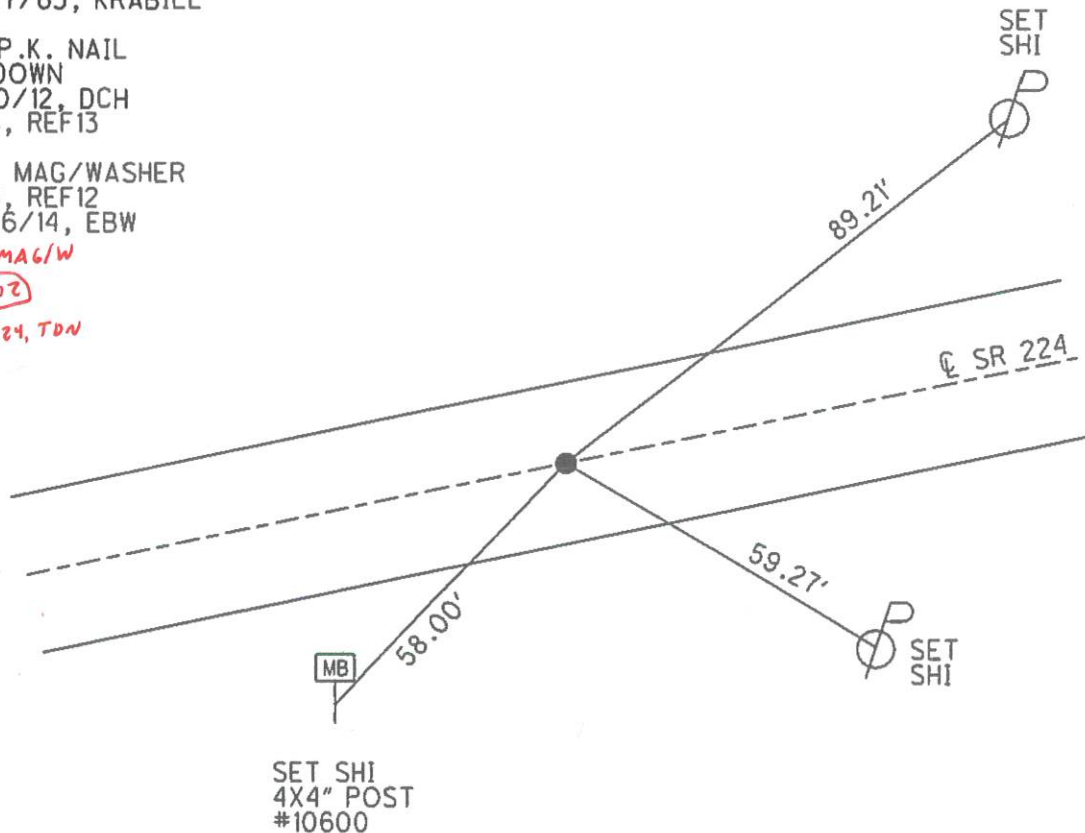


RECORD: P.I.
 $\Delta = 0^\circ 35' \text{ LT}$
FD R.R.SPIKE
11/27/63, KRABILL

FD P.K. NAIL
3" DOWN
2/10/12, DCH
GPS, REF13

SET MAG/WASHER
GPS, REF12
6/26/14, EBW

FD MAG/W
REF12
9/10/24, TON



O.D.O.T. DISTRICT 2 SURVEY OFFICE (USE ONLY)

PERSONNEL

REFERENCE NO.

13

SHEET

13

OF

39

NOTES RHOADES *TDN*

H.C. HOMAN

R.C. LEU

GPS THOMAS *TDN*

MEYER *LSPC*

DATE

6/26/14

9/10/24

WEATHER

clear OVERCAST

TEMP.

70° *J*

ROUTE

SR 224

COUNTY

SENECA

TOWNSHIP

LOUDON

SECTION

33

T 2 N

R 13 E

TYPE MONUMENT

~~P.K./WASHER~~ *MAG SHANK*

~~ON SURFACE~~ - BELOW

6" ON

LEFT - *C* PAV'T - ~~RIGHT~~

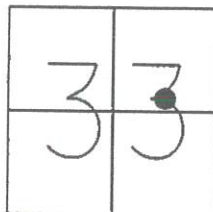
1.2' J

- TO - EDGE PAVEMENT

S.L.M. 145+22.78

Grid: Northing: 518624.443

Easting: 1728912.381



RECORD: P.I.

$\Delta = 01^{\circ}11' \text{ RT}$

11/27/63, KRABILL

FD P.K. NAIL

6" DOWN

2/10/12, DCH

GPS, REF14

SET MAG/WASHER

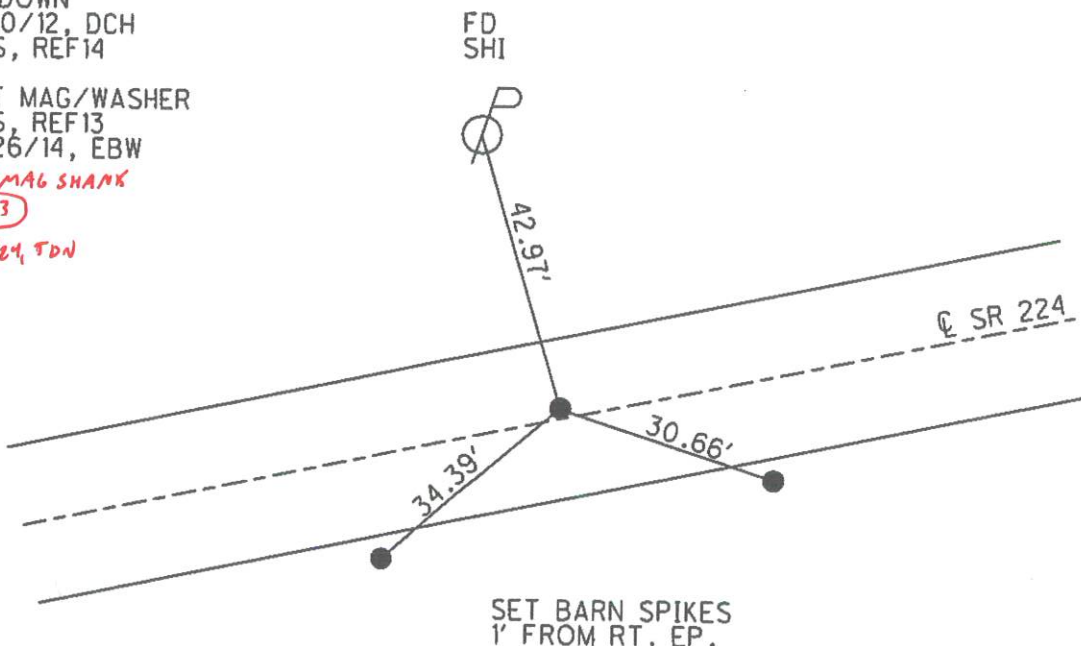
GPS, REF13

6/26/14, EBW

FD MAG SHANK

(REF13)

9/10/24, TDN

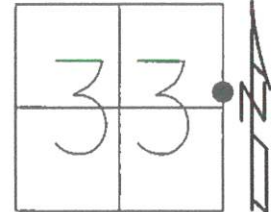


O.D.O.T. DISTRICT 2 SURVEY OFFICE (USE ONLY)

PERSONNEL _____ REFERENCE NO. 14 SHEET 14 OF 39
 NOTES RHOADES TDN DATE 6/11/13 9/10/24 ROUTE SR 224
 H.C. ROUSOS WEATHER CLEAR CLOUDY COUNTY SENECA
 R.C. WESTFALL TEMP. 73° 76° TOWNSHIP LOUDON
GPS TDN SECTION 33
LSPL T 2 N R 13 E

TYPE MONUMENT MAG P.K. / WASHER
~~ON SURFACE~~ - BELOW 4" ON
 LEFT - Q PAV'T - RIGHT ON
 - TO - EDGE PAVEMENT
 S.L.M. 163+74.79

Grid: Northing: 518961.051 Easting: 1730733.464

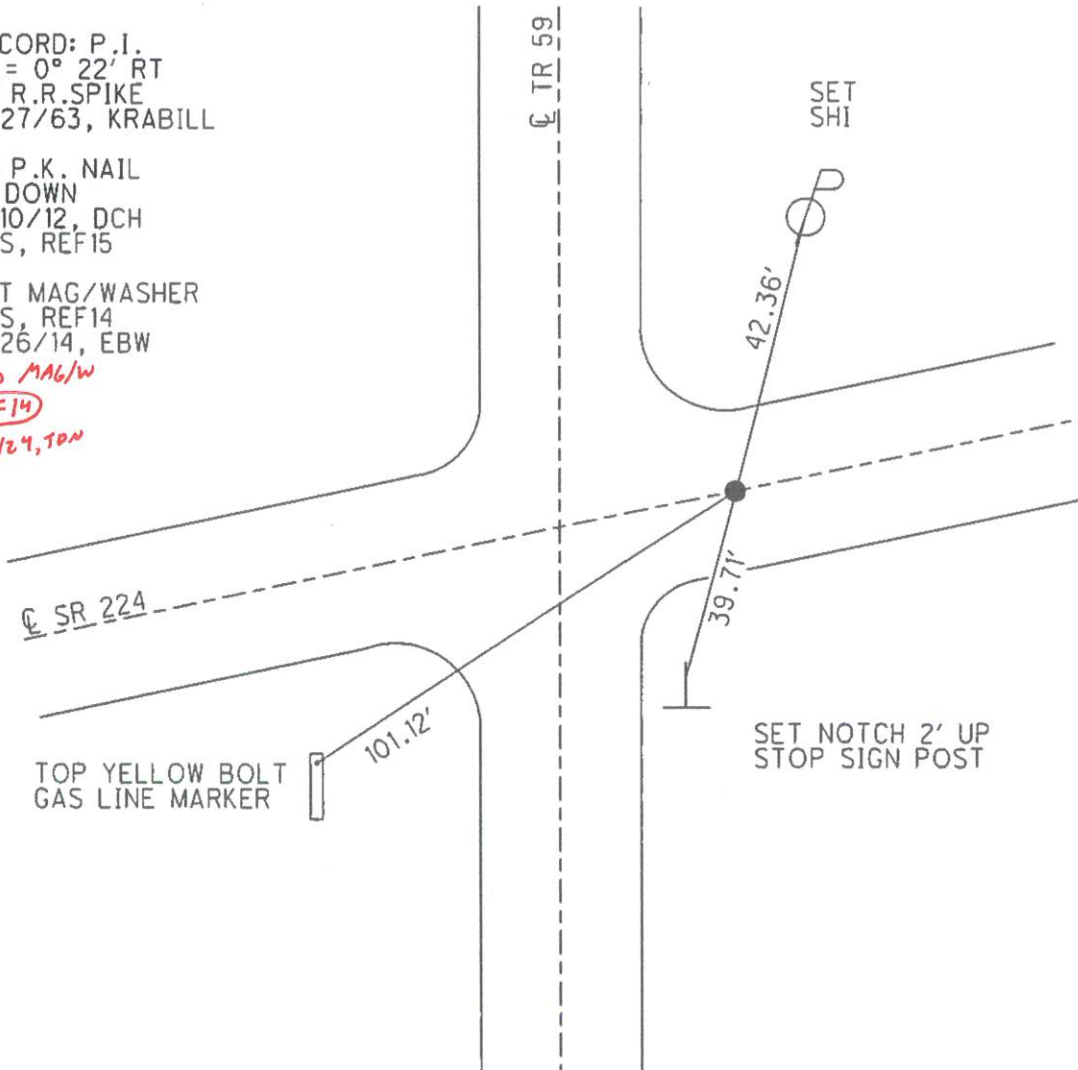


RECORD: P.I.
 $\Delta = 0^\circ 22' RT$
 FD R.R. SPIKE
 11/27/63, KRABILL

FD P.K. NAIL
 4" DOWN
 2/10/12, DCH
 GPS, REF15

SET MAG/WASHER
 GPS, REF14
 6/26/14, EBW

FND MAG/W
REF14
 9/10/24, TDN



O.D.O.T. DISTRICT 2 SURVEY OFFICE (USE ONLY)

PERSONNEL

REFERENCE NO. 15

SHEET 15 OF 39

NOTES RHOADES TON
H.C. HOMAN
R.C. LEU
GPS THOMAS TON
MEYER LSPC

DATE 6/26/14 9/10/24
WEATHER CLEAR OVERCAST
TEMP. 70°

ROUTE SR 224
COUNTY SENECA
TOWNSHIP LOUDON
SECTION 34
T 2 N R 13 E

TYPE MONUMENT P.K./NAIL MAG/WASHER

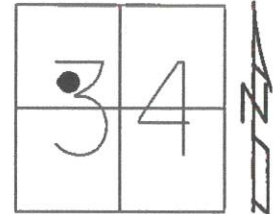
~~ON SURFACE~~ - BELOW 4" ON

~~LEFT~~ - Q PAV'T - RIGHT 1.0'

TO - EDGE PAVEMENT

S.L.M. 176+96.14

Grid: Northing: 519193.277 Easting: 1732034.054



RECORD: P.I.
 $\Delta = 01^{\circ}31' \text{ LT}$
FD R.R. SPIKE
12/3/63, KRABILL

FD P.K./WASHER
AT SURFACE
1' RT Q
11/86, HOFFMAN

FD P.K. NAIL
4" DOWN
2/10/12, DCH
GPS, REF16

SET MAG/WASHER
GPS, REF15
6/26/14, EBW

FND MAG/W

REF15

9/10/24, TON

FD
SHI



43.22'

Q SR 224

29.73'

29.86'

SET BARN SPIKES
1' FROM RT. EP.

O.D.O.T. DISTRICT 2 SURVEY OFFICE (USE ONLY)

PERSONNEL _____ REFERENCE NO. 15 A SHEET 16 OF 39

NOTES RHOADES TDN DATE ~~6/11/13~~ 9/10/24 ROUTE SR 224

H.C. ROUSOS WEATHER ~~CLOUDY~~ CLEAR COUNTY SENECA

R.C. WESTFALL TEMP. 73° TOWNSHIP LOUDON

GPS TDN SECTION 34

LSPL T 2 N R 13 E

TYPE MONUMENT ~~P.K./WASHER~~ CMON

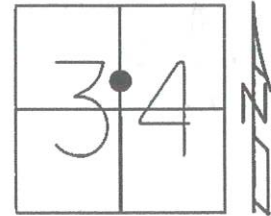
ON SURFACE - ~~BELOW~~ ON ✓

LEFT - Q PAV'T - RIGHT ON

- TO - EDGE PAVEMENT

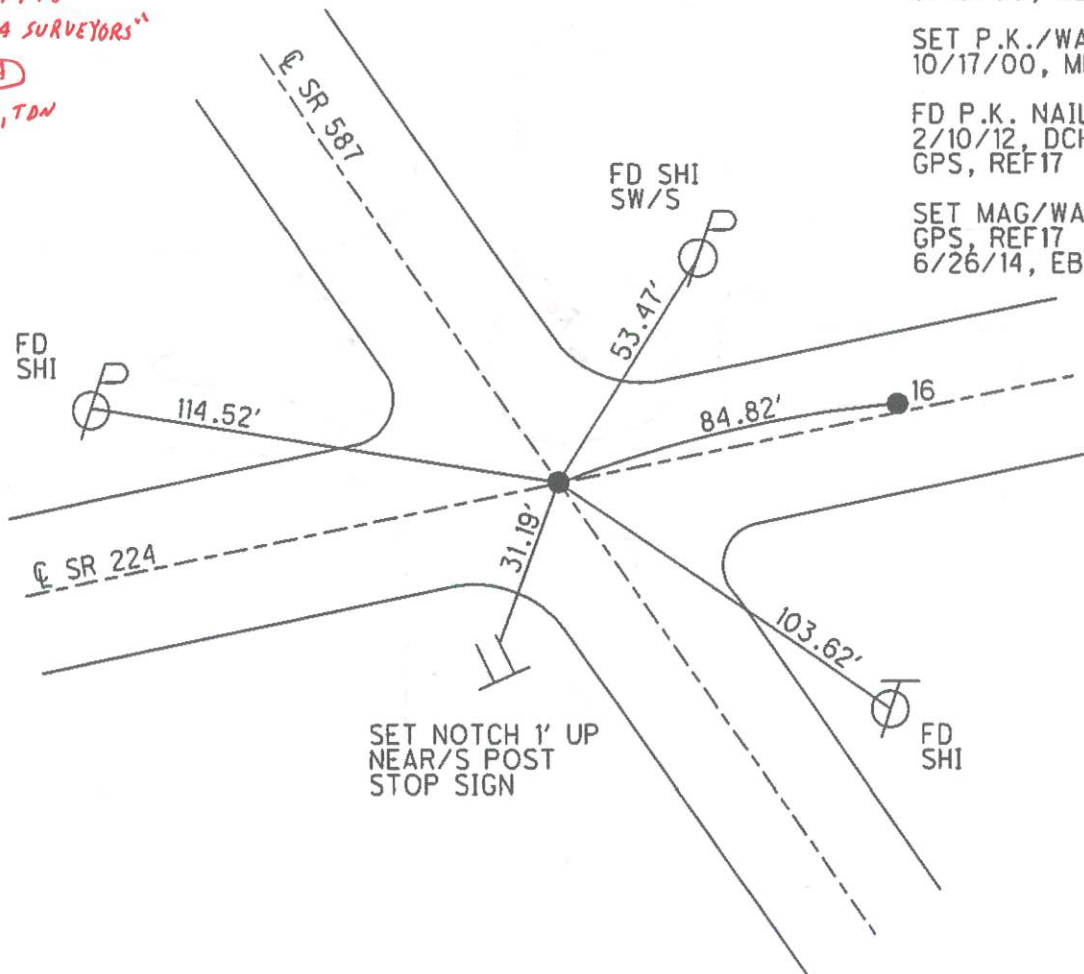
S.L.M. 192+29.74

Grid: Northing: 519502.211 Easting: 1733536.418



FD CMON
"DOT CL
PS No. 7973
GARCIA SURVEYORS"
REF15A
9/10/24, TDN

RECORD:
FD P.K./WASHER
9/10/00, MB
SET P.K./WASHER
10/17/00, MB
FD P.K. NAIL
2/10/12, DCH
GPS, REF17
SET MAG/WASHER
GPS, REF17
6/26/14, EBW



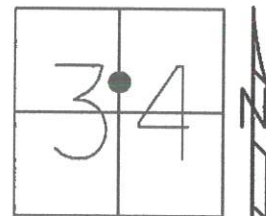
Keyed In Monument is new SEEBACK FOR NEW ALIGNMENT
FOR 15A AND 16

O.D.O.T. DISTRICT 2 SURVEY OFFICE (USE ONLY)

PERSONNEL		REFERENCE NO.	16	SHEET	17	OF	39
NOTES	RHOADES <i>TDN</i>	DATE	6/11/13 <i>9/10/24</i>	ROUTE	SR 224		
H.C.	ROUSOS	WEATHER	CLOUDY <i>CLEAR</i>	COUNTY	SENECA		
R.C.	WESTFALL	TEMP.	73°✓	TOWNSHIP	LOUDON		
	<i>GPS</i>			SECTION	34		
	<i>TDN</i>			T	2	N	R
	<i>LSPC</i>						13 E

TYPE MONUMENT ~~P.K./WASHER~~ *CMON*
~~ON SURFACE - BELOW~~ *4" ON*
 LEFT - ~~Q~~ PAV'T - ~~RIGHT~~ *0.5'*
 11.6' TO LT EDGE PAVEMENT
 S.L.M. 193+14.49

Grid: Northing: 519519.164 Easting: 1733619.552

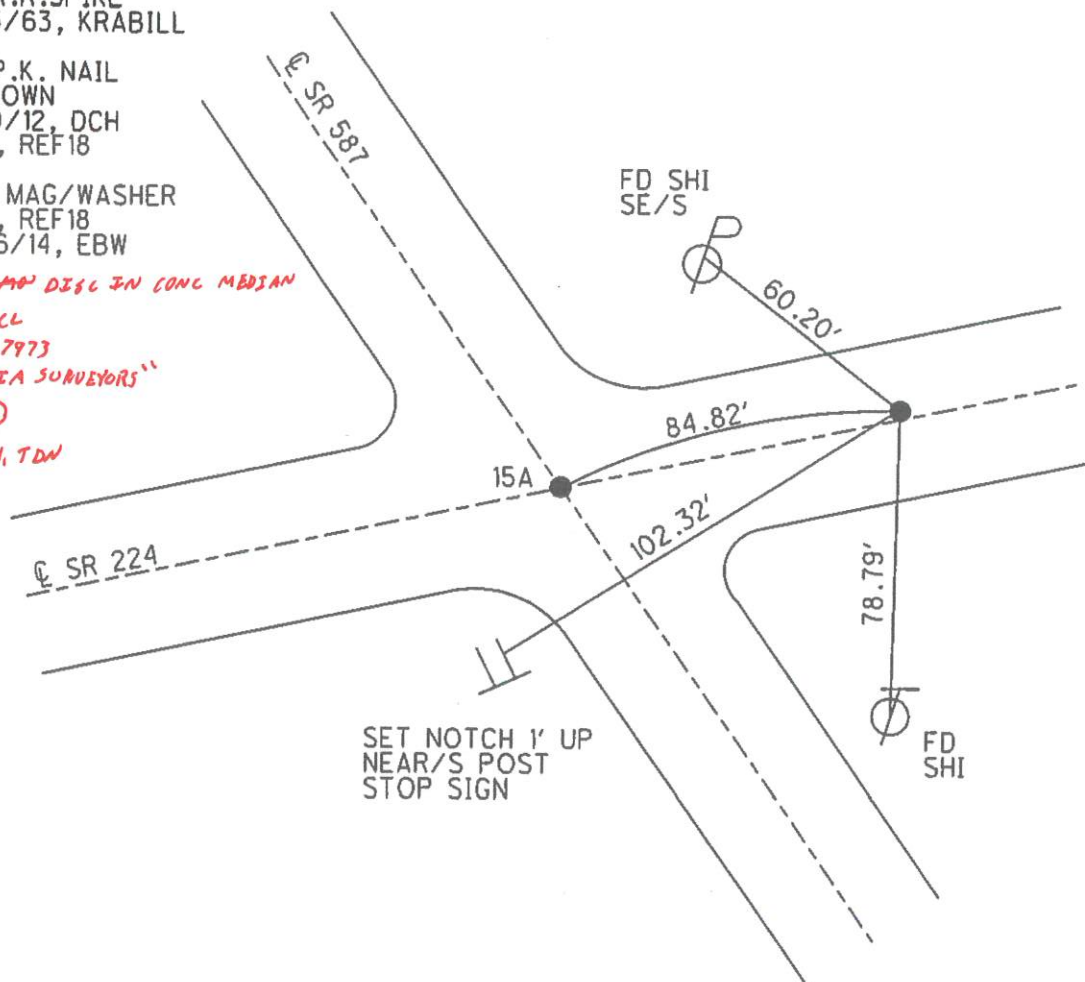


RECORD: P.I.
 $\Delta = 0^\circ 48' RT$
 FD R.R.SPIKE
 12/3/63, KRABILL

FD P.K. NAIL
 4" DOWN
 2/10/12, DCH
 GPS, REF18

SET MAG/WASHER
 GPS, REF18
 6/26/14, EBW

FD ~~CMON~~ DISC IN CONC MEDIAN
"ODOT CL
PS N. 7973
GARCIA SURVEYORS"
(REF16)
9/10/24, TDN

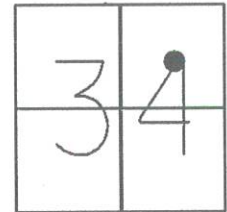


Keyed in - Monument is new SEE Back of 15A for new alignment

O.D.O.T. DISTRICT 2 SURVEY OFFICE (USE ONLY)

PERSONNEL _____ REFERENCE NO. 16 B SHEET 18 OF 39
 NOTES RHOADES TON DATE 6/11/13 → 9/10/24 ROUTE SR 224
 H.C. ROUSOS WEATHER CLOUDY → CLEAR COUNTY SENECA
 R.C. WESTFALL TEMP. 73° ✓ TOWNSHIP LOUDON
 GPS _____ SECTION 34
 _____ T 2 N R 13 E
 _____ LSPC

TYPE MONUMENT MAG ✓
P.K. NAIL
 ON SURFACE - ~~BELOW~~ ON ✓
 LEFT - ℄ PAV'T - RIGHT ON ✓
11.8' TO LT EDGE PAVEMENT
 S.L.M. 208+18.41

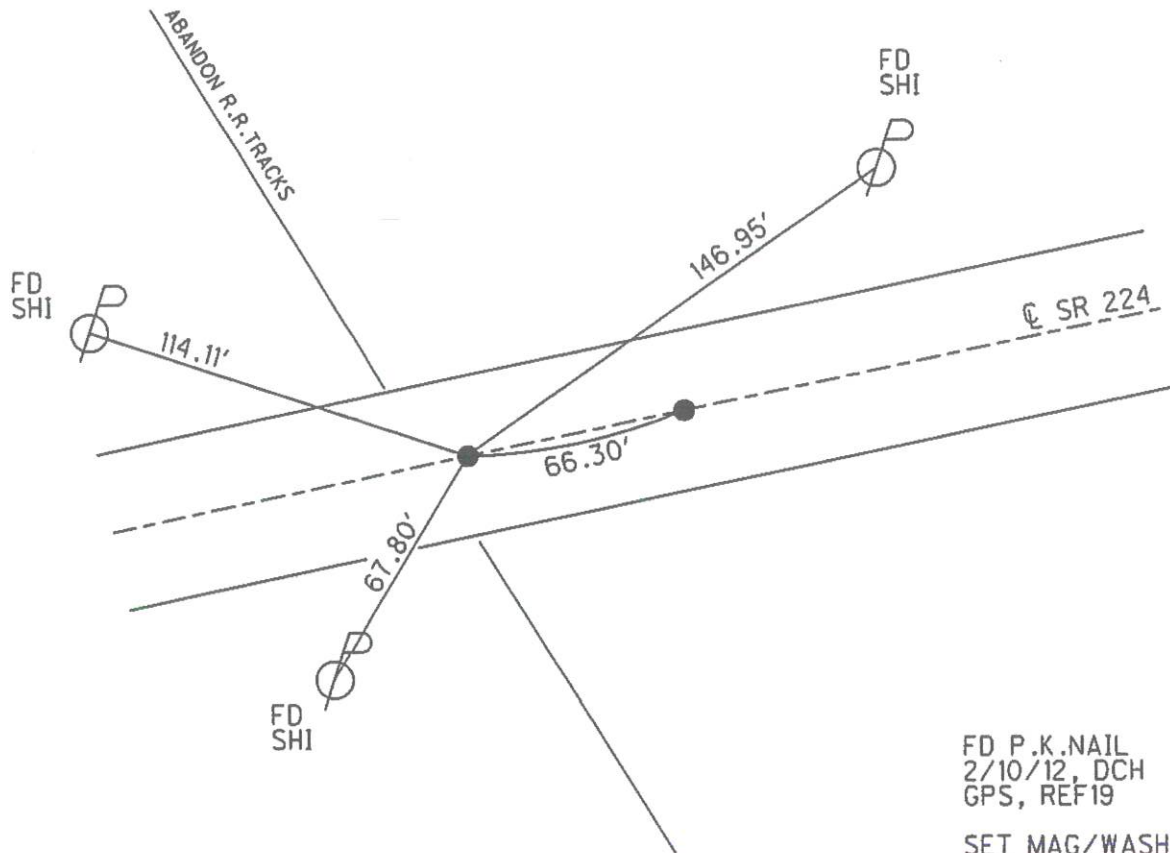


Grid: Northing: 519801.506 Easting: 1735096.708

FND MAG NAIL

(REF 16B)

9/10/24, TON



FD P.K. NAIL
 2/10/12, DCH
 GPS, REF 19

SET MAG/WASHER
 GPS, REF 16
 7/23/14, EBW

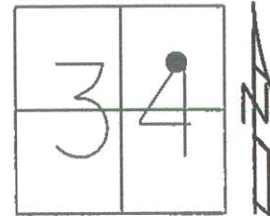
O.D.O.T. DISTRICT 2 SURVEY OFFICE (USE ONLY)

PERSONNEL _____ REFERENCE NO. 17 SHEET 19 OF 39

NOTES RHOADES TON DATE 6/11/13 9/10/24 ROUTE SR 224
H.C. ROUSOS WEATHER CLOUDY CLEAR COUNTY SENECA
R.C. WESTFALL TEMP. 73° TOWNSHIP LOUDON
GPS TON SECTION 34
LSPC T 2 N R 13 E

TYPE MONUMENT P.K. SHANK MAG NAIL
~~ON SURFACE~~ - BELOW 3" ON
LEFT - Q PAV'T - RIGHT ON
11.8' TO LT EDGE PAVEMENT
S.L.M. 208+84.71

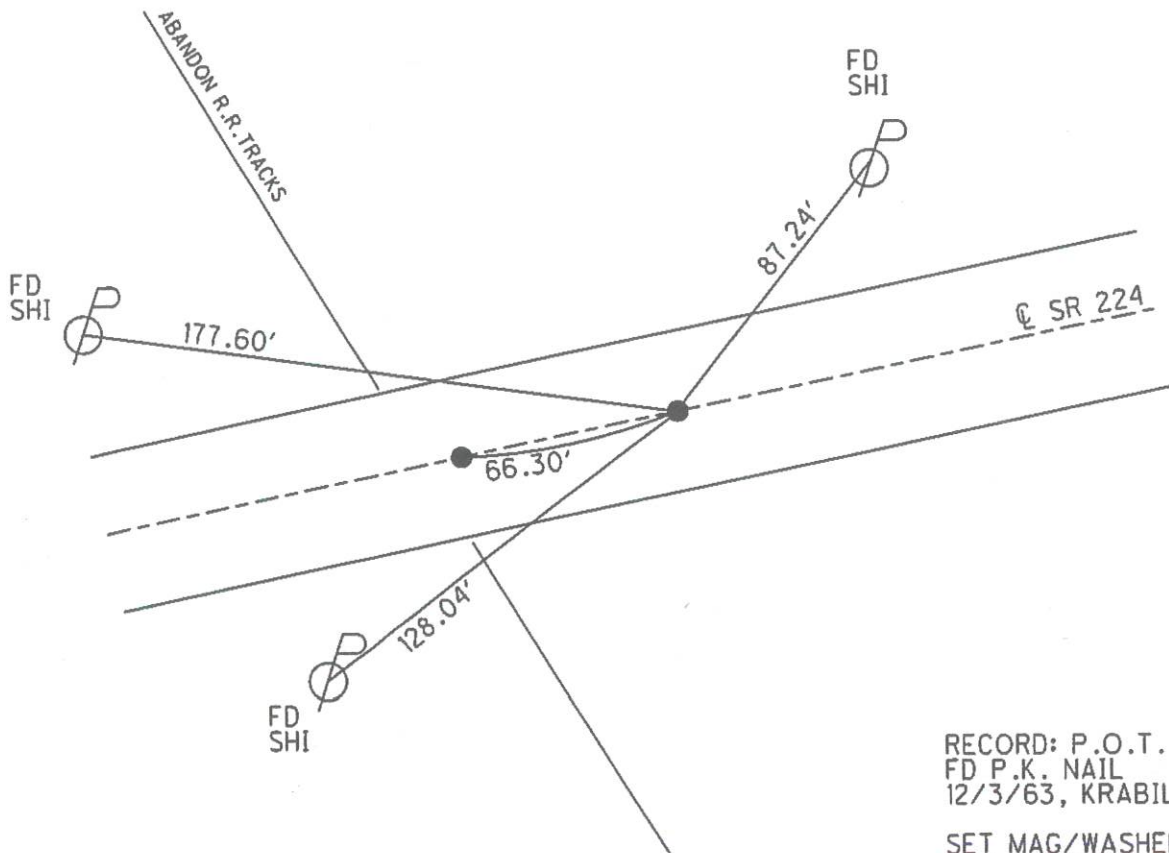
Grid: Northing: 519813.550 Easting: 1735161.919



FNA MAG NAIL

REF17

9/10/24, TON



RECORD: P.O.T.
FD P.K. NAIL
12/3/63, KRABILL

SET MAG/WASHER
GPS, REFA16
7/23/14, EBW

O.D.O.T. DISTRICT 2 SURVEY OFFICE (USE ONLY)

PERSONNEL

REFERENCE NO. 18

SHEET 20 OF 39

NOTES LEU TDN

H.C. HOMAN

R.C. MEYER

GPS THOMAS TDN

LSPC

DATE 7/9/14 9/10/24

WEATHER SUNNY CLEAR

TEMP. 68° 75°

ROUTE SR 224

COUNTY SENECA

TOWNSHIP LOUDON

SECTION 34

T 2 N R 13 E

TYPE MONUMENT MAG/WASHER ✓

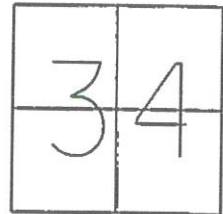
~~ON SURFACE~~ - BELOW 4" ON

LEFT - Q PAV'T - RIGHT ON ✓

- TO - EDGE PAVEMENT

S.L.M. 217+02.44

Grid: Northing: 519967.478 Easting: 1735964.938



RECORD: P.I.
 $\Delta = 0^\circ 18' LT$
 FD R.R. SPIKE
 12/3/63, KRABILL

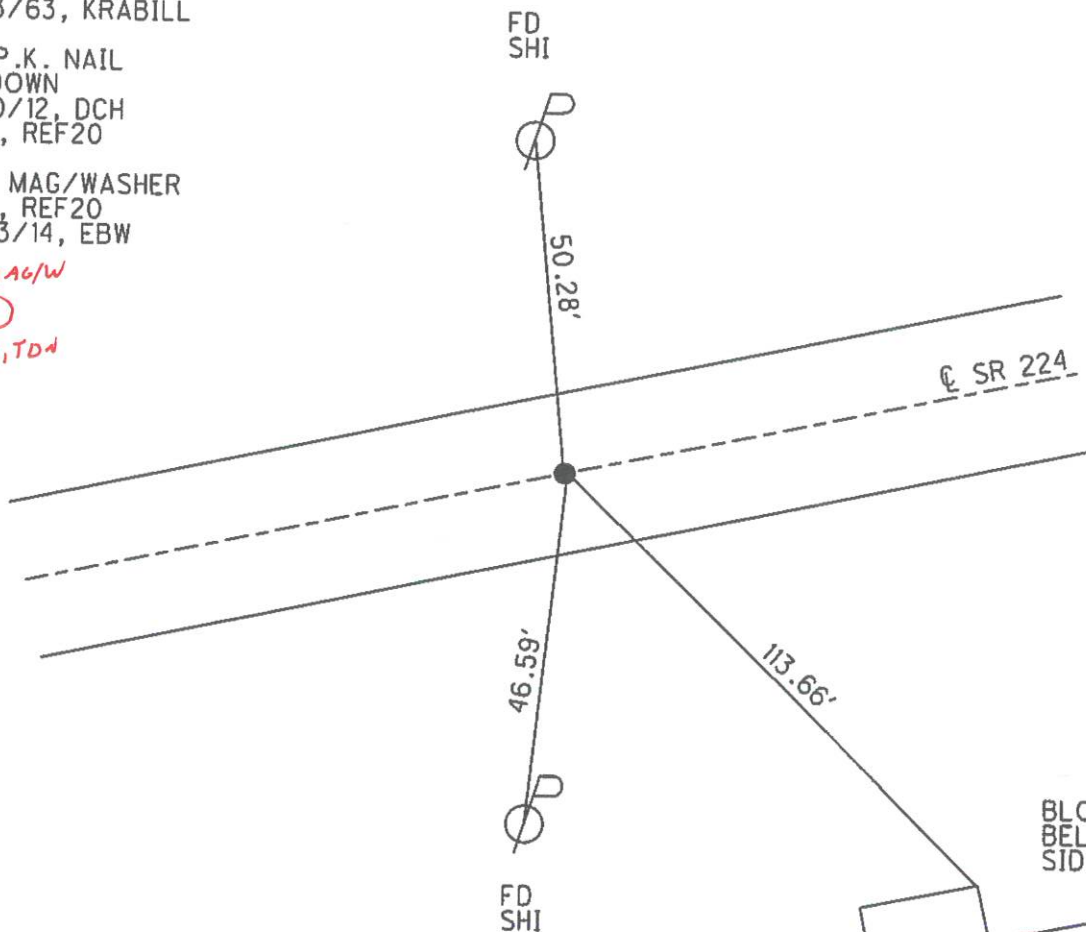
FD P.K. NAIL
 6" DOWN
 2/10/12, DCH
 GPS, REF20

SET MAG/WASHER
 GPS, REF20
 7/23/14, EBW

FND MAG/W

REF18

9/10/24, TDN

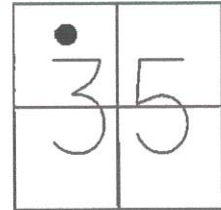


O.D.O.T. DISTRICT 2 SURVEY OFFICE (USE ONLY)

PERSONNEL _____ REFERENCE NO. 19 SHEET 21 OF 39
 NOTES WESTFALL TON DATE 6/12/13 9/10/24 ROUTE SR 224
 H.C. ROUSOS WEATHER FAIR CLEAR COUNTY SENECA
 R.C. HOMAN TEMP. 73° 75° TOWNSHIP LOUDON
 GPS _____ TON _____ SECTION 35
 _____ LSPC _____ T 2 N R 13 E

TYPE MONUMENT MAG P.K. WASHER REF18A MAG NAIL
~~ON SURFACE~~ - BELOW 4" ON ON
 LEFT - Q PAV'T - RIGHT ON 0.5' LT
 - TO - EDGE PAVEMENT
 S.L.M. 230+64.28

Grid: Northing: 520229.506 Easting: 1737295.209



FND MAG NAIL

REF19

9/10/24, TON

RECORD: P.I.
 $\Delta = 0^\circ 21' RT$
 FD P.K. NAIL
 12/3/63, KRABILL

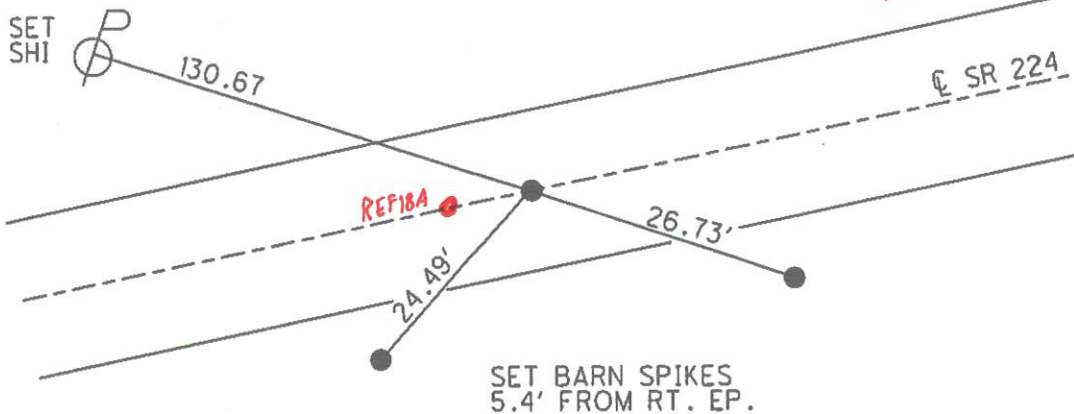
FD P.K. NAIL
 4" DOWN
 2/10/12, DCH
 GPS, REF21

SET MAG/WASHER
 GPS, REF21
 7/23/14, EBW

FND MAG/W

REF19

9/10/24, TON



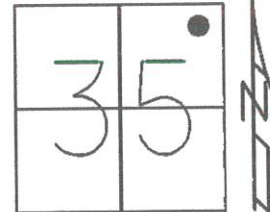
Distance between = 4.25'
 (GPS)

O.D.O.T. DISTRICT 2 SURVEY OFFICE (USE ONLY)

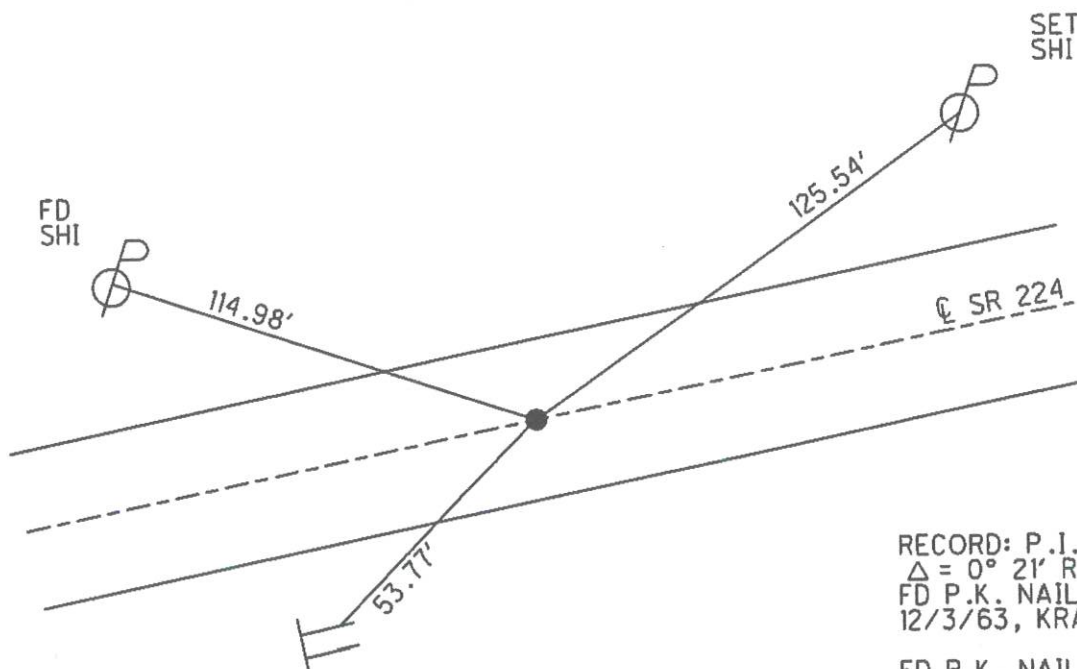
PERSONNEL _____ REFERENCE NO. 21 SHEET 22 OF 39
 NOTES LEU TON DATE 7/9/14 9/10/24 ROUTE SR 224
 H.C. HOMAN WEATHER SUNNY COUNTY SENECA
 R.C. MEYER TEMP. 68° 75° TOWNSHIP LOUDON
GPS THOMAS TON SECTION 35
LSIC T 2 N R 13 E

TYPE MONUMENT MAG ✓
~~ON SURFACE~~ - ~~BELOW~~ 3" ON
 LEFT - Q PAV'T - ~~RIGHT~~ 0.5' ✓
 - TO - EDGE PAVEMENT
 S.L.M. 265+30.06

Grid: Northing: 520879.458 Easting: 1740699.763



FND MAG/W
REF21
9/10/24, TON



RECORD: P.I.
 $\Delta = 0^\circ 21' \text{ RT}$
 FD P.K. NAIL
 12/3/63, KRABILL

FD P.K. NAIL
 4" DOWN
 2/10/12, DCH
 GPS, REF21

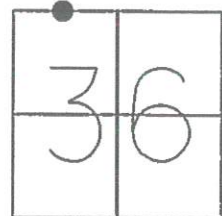
SET MAG/WASHER
 GPS, REF21
 7/23/14, EBW

O.D.O.T. DISTRICT 2 SURVEY OFFICE (USE ONLY)

PERSONNEL _____ REFERENCE NO. 22 SHEET 23 OF 39
 NOTES WESTFALL TON DATE ~~6/12/13~~ 9/10/24 ROUTE SR 224
 H.C. ROUSOS WEATHER FAIR SUNNY COUNTY SENECA
 R.C. HOMAN TEMP. 73° 76° TOWNSHIP LOUDON
GPS TON SECTION 36
LSPC T 2 N R 13 E

TYPE MONUMENT ~~P.K. NAIL~~ MAG/WASHER
~~ON SURFACE~~ - BELOW 3" ON
 LEFT - ☉ PAV'T - RIGHT ON ✓
 - TO - EDGE PAVEMENT
 S.L.M. 282+95

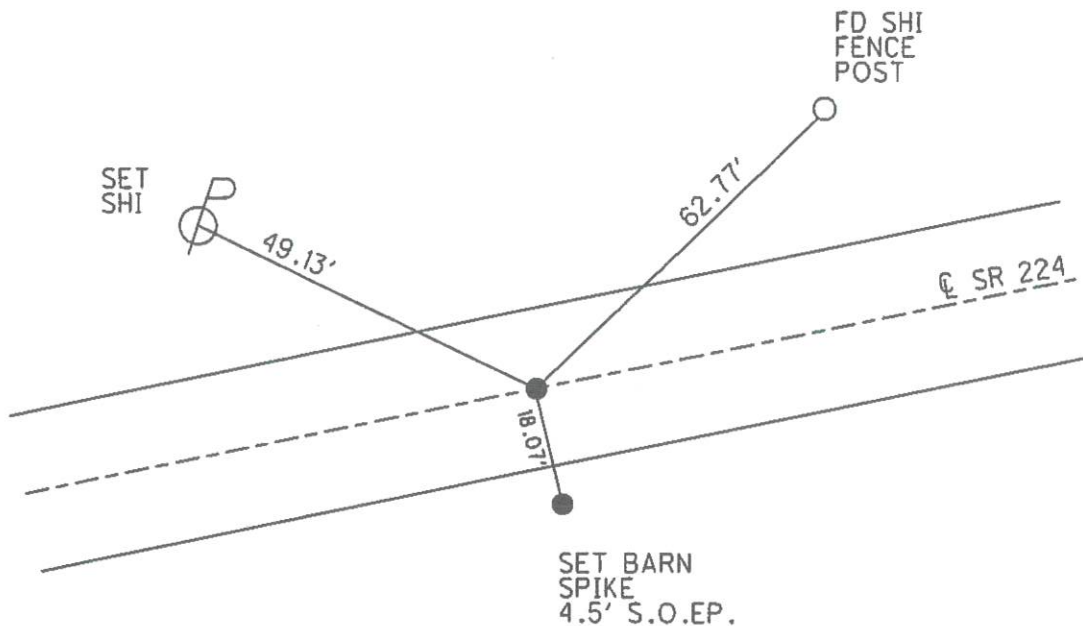
Grid: Northing: 521195.829 Easting: 1742379.170



FND MAG/W

REF 22

9/10/24, TON



RECORD: P.I.
 $\Delta = 0^\circ 10' \text{ RT}$
 FD P.K. NAIL
 12/3/63, KRABILL

FD P.K. NAIL
 4" DOWN
 2/10/12, DCH
 GPS, REF23

SET MAG/WASHER
 GPS, REF23
 7/23/14, EBW

O.D.O.T. DISTRICT 2 SURVEY OFFICE (USE ONLY)

PERSONNEL

REFERENCE NO. 23

SHEET 24 OF 39

NOTES WESTFALL TON

H.C. ROUSOS

R.C. HOMAN

GPS

TON

LSPC

DATE

6/12/13 9/10/24

WEATHER

FAIR SUNNY

TEMP.

73° 75°

ROUTE SR 224

COUNTY SENECA

TOWNSHIP LOUDON

SECTION 25

T 2 N R 13 E

TYPE MONUMENT MAG P.K./WASHER

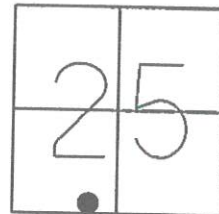
~~ON SURFACE~~ - BELOW 4" ON

LEFT - Q PAV'T - RIGHT ON

- TO - EDGE PAVEMENT

S.L.M. 289+87

Grid: Northing: 521321.762 Easting: 1743059.437



RECORD: P.I.
 $\Delta = 0^{\circ}04' \text{ LT}$
 TIES NOT GOOD.
 POINT NOT SET
 12/4/63, KRABILL

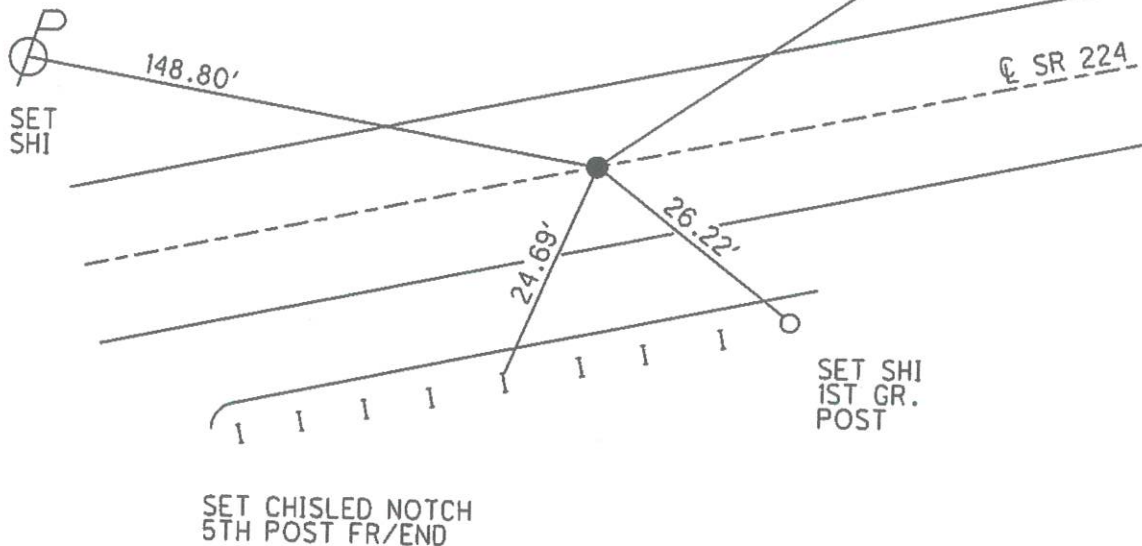
FND MAG/W

REF23

9/10/24, TON

FD P.K. NAIL
 4" DOWN
 2/10/12, DCH
 GPS, REF24

SET MAG/WASHER
 GPS, REF24
 7/23/14, EBW



O.D.O.T. DISTRICT 2 SURVEY OFFICE (USE ONLY)

PERSONNEL

REFERENCE NO. 24

SHEET 25 OF 39

NOTES WESTFALL TDN

H.C. ROUSOS

R.C. HOMAN

GPS

TDN

LSPC

DATE 6/12/13 9/10/24

WEATHER FAIR SUNNY

TEMP. 73° 75°

ROUTE SR 224

COUNTY SENECA

TOWNSHIP LOUDON

SECTION 25

T 2 N R 13 E

TYPE MONUMENT P.K. SHANK MAG/WASHER

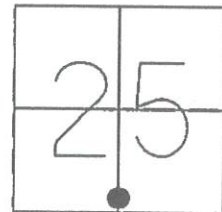
~~ON SURFACE~~ - BELOW 4" ON

LEFT - Q PAV'T - RIGHT ON

- TO - EDGE PAVEMENT

S.L.M. 297+73

Grid: Northing: 521465.437 Easting: 1743831.916



RECORD: P.I.
Δ = 0°06' LT
FD P.K. NAIL
12/4/63, KRABILL

FD P.K. NAIL
3" DOWN
2/10/12, DCH
GPS, REF25

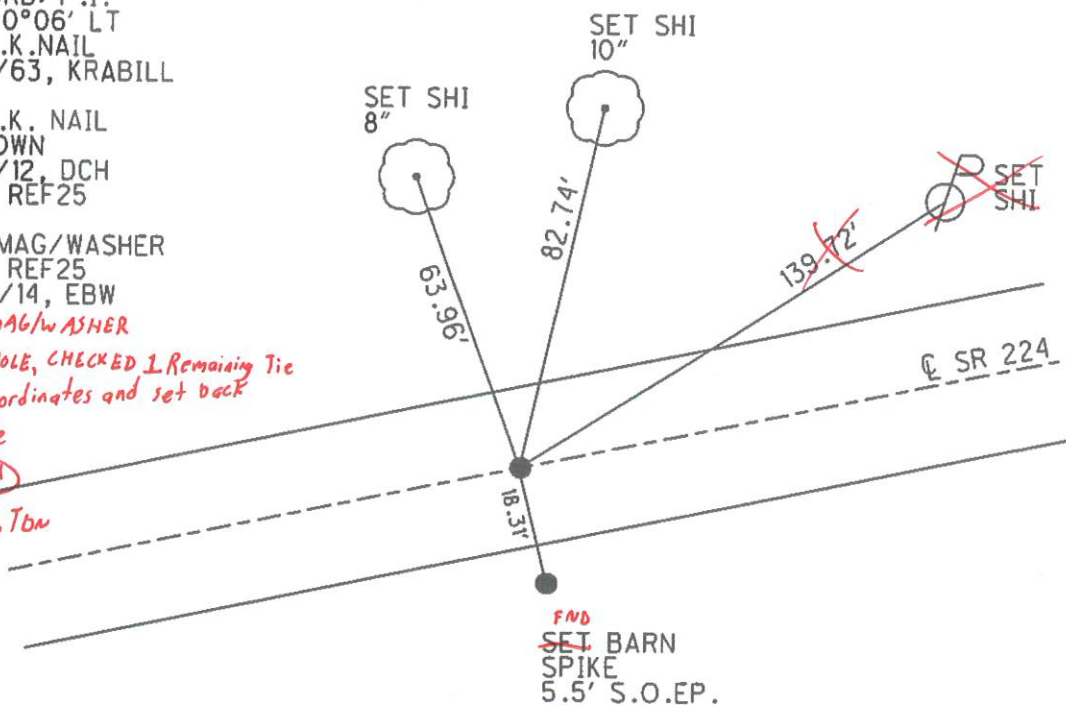
SET MAG/WASHER
GPS, REF25
7/23/14, EBW

SET MAG/WASHER

FND HOLE, CHECKED 1 Remaining Tie
and Coordinates and set back
in hole

REF24

9/10/24, Tbn



O.D.O.T. DISTRICT 2 SURVEY OFFICE (USE ONLY)

PERSONNEL _____ REFERENCE NO. 25 SHEET 26 OF 39
 NOTES WESTFALL TDN DATE 6/12/13 9/10/24 ROUTE SR 224
 H.C. ROUSOS WEATHER FAIR Sunny COUNTY SENECA
 R.C. HOMAN TEMP. 73° 80° TOWNSHIP LOUDON
 GPS _____ TDN _____
 LSPC _____ SECTION 25
 T 2 N R 13 E

TYPE MONUMENT P.K. NAIL MAG/WASHER

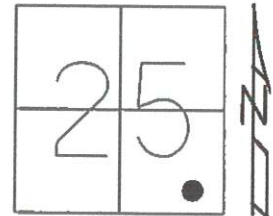
~~ON SURFACE~~ - BELOW 4" ON

LEFT - Q PAV'T - ~~RIGHT~~ ON 1'

TO EDGE PAVEMENT

S.L.M. 316+65

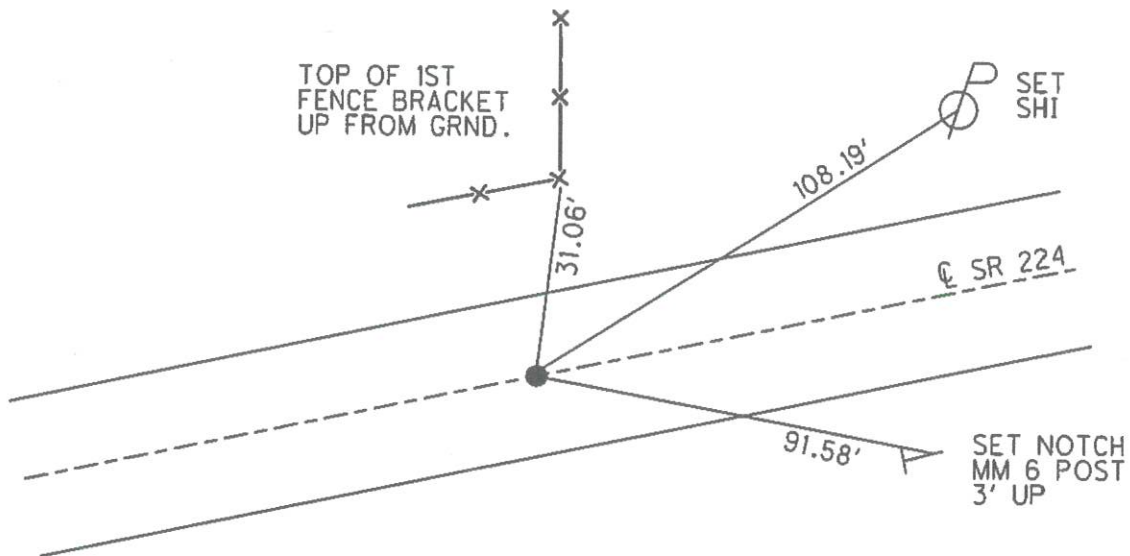
Grid: Northing: 521814.292 Easting: 1745690.894



FND MAG/W
REF25

9/10/24, TDN

RES.#7185



RECORD: P.I.
 $\Delta = 0^\circ 35' RT$
 FD P.K. NAIL
 12/4/63, KRABILL

FD P.K. NAIL
 4" DOWN
 2/10/12, DCH
 GPS, REF26

SET MAG/WASHER
 7/9/14, DCH
 GPS, REFA25
 7/23/14, EBW

O.D.O.T. DISTRICT 2 SURVEY OFFICE (USE ONLY)

PERSONNEL _____ REFERENCE NO. 25 A SHEET 27 OF 39

NOTES WESTFALL TON DATE 6/12/13 9/10/24 ROUTE SR 224

H.C. ROUSOS WEATHER FAIR SUNNY COUNTY SENECA

R.C. HOMAN TEMP. 73° 80° TOWNSHIP LOUDON

GPS TON SECTION 25

LSPC T 2 N R 13 E

TYPE MONUMENT MASONRY NAIL MAG/W

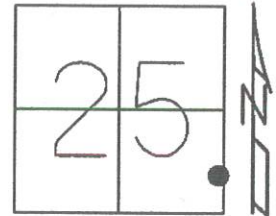
~~ON SURFACE~~ - BELOW 2" ON

LEFT - Q PAV'T - RIGHT ON

- TO - EDGE PAVEMENT

S.L.M. 326+59

Grid: Northing: 521987.805 Easting: 1746670.350



RECORD:
FD MASONRY NAIL
2" DOWN, ORIGIN
UNKNOWN.
4/16/04, DCH

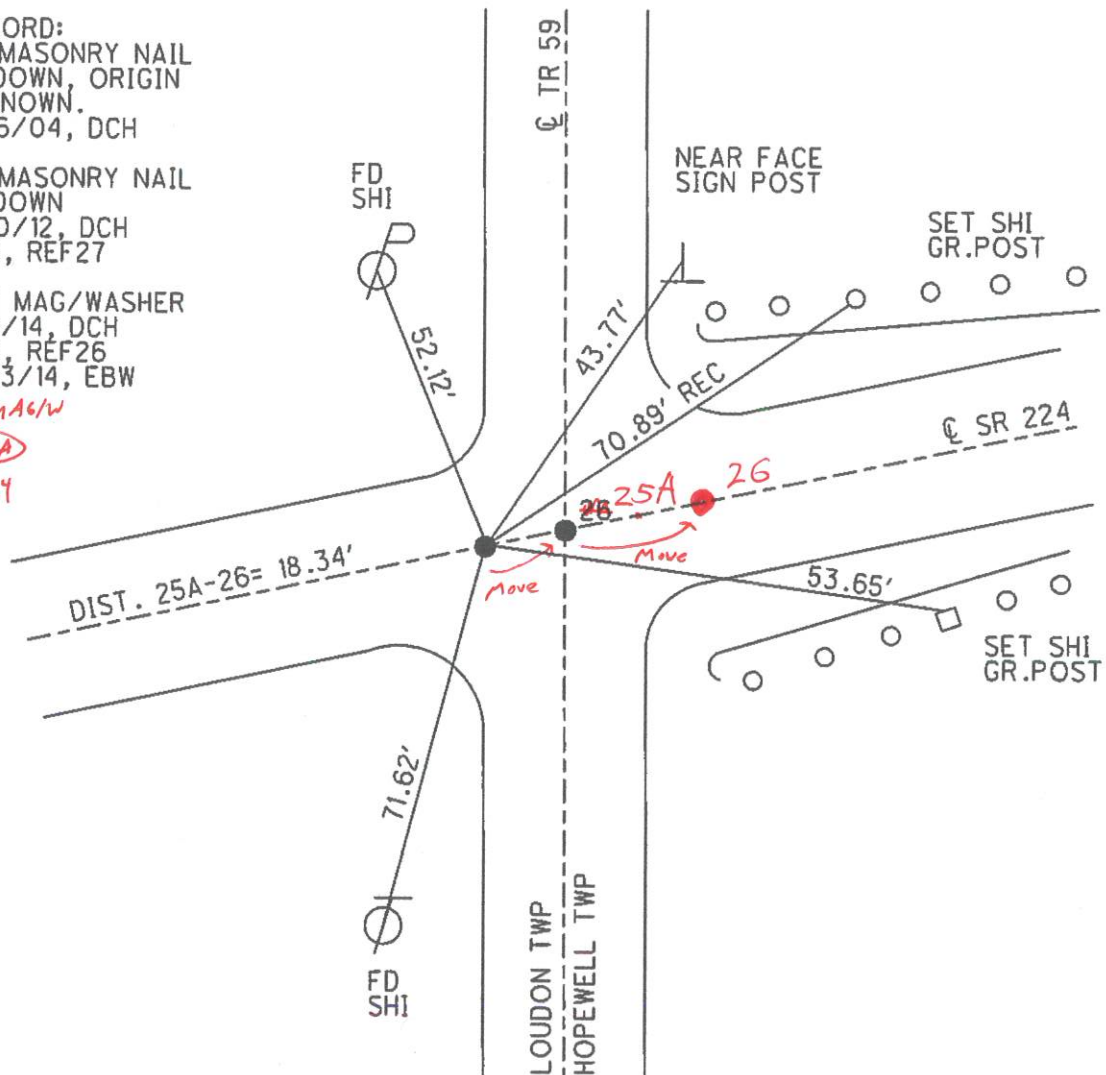
FD MASONRY NAIL
3" DOWN
2/10/12, DCH
GPS, REF27

SET MAG/WASHER
7/9/14, DCH
GPS, REF26
7/23/14, EBW

FND MAG/W

REF25A

9/10/24



O.D.O.T. DISTRICT 2 SURVEY OFFICE (USE ONLY)

PERSONNEL

REFERENCE NO.

26

SHEET 28 OF 39

28

01

OF 39

NOTES WESTFALL TON

DATE _____

~~6/12/13~~

9/10/24

ROUTE SR 224

SR 224

H.C. ROUSOS

WEATHER

~~FAIR~~ SUNNY

COUNTY SENECA

SENECA

R.C. HOMAN

TEMP.

~~73°~~ 80°

TOWNSHIP HOPEWELL

HOPEWELL

GP5

T_{DN}

LSPC

TOWNSHIP
SECTION

$$\frac{HC}{30}$$

T_2_N R_14_E

TYPE MONUMENT ~~P.K.SHANK~~ MAG/W

~~ON SURFACE~~ - BELOW -2" *ON*

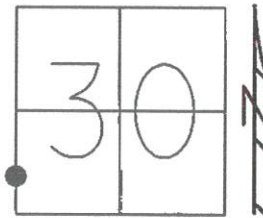
LEFT - C PAV'T - RIGHT - ON

____ TO ____ EDGE PAVEMENT

S.L.M. 326+77.90

Grid: Northing: 521990.807 Easting: 1746688.436

Easting:



RECORD: P.I.
 $\Delta = 0^{\circ}08' \text{ LT}$
 FD P.K.NAIL
 12/4/63, KRABILL

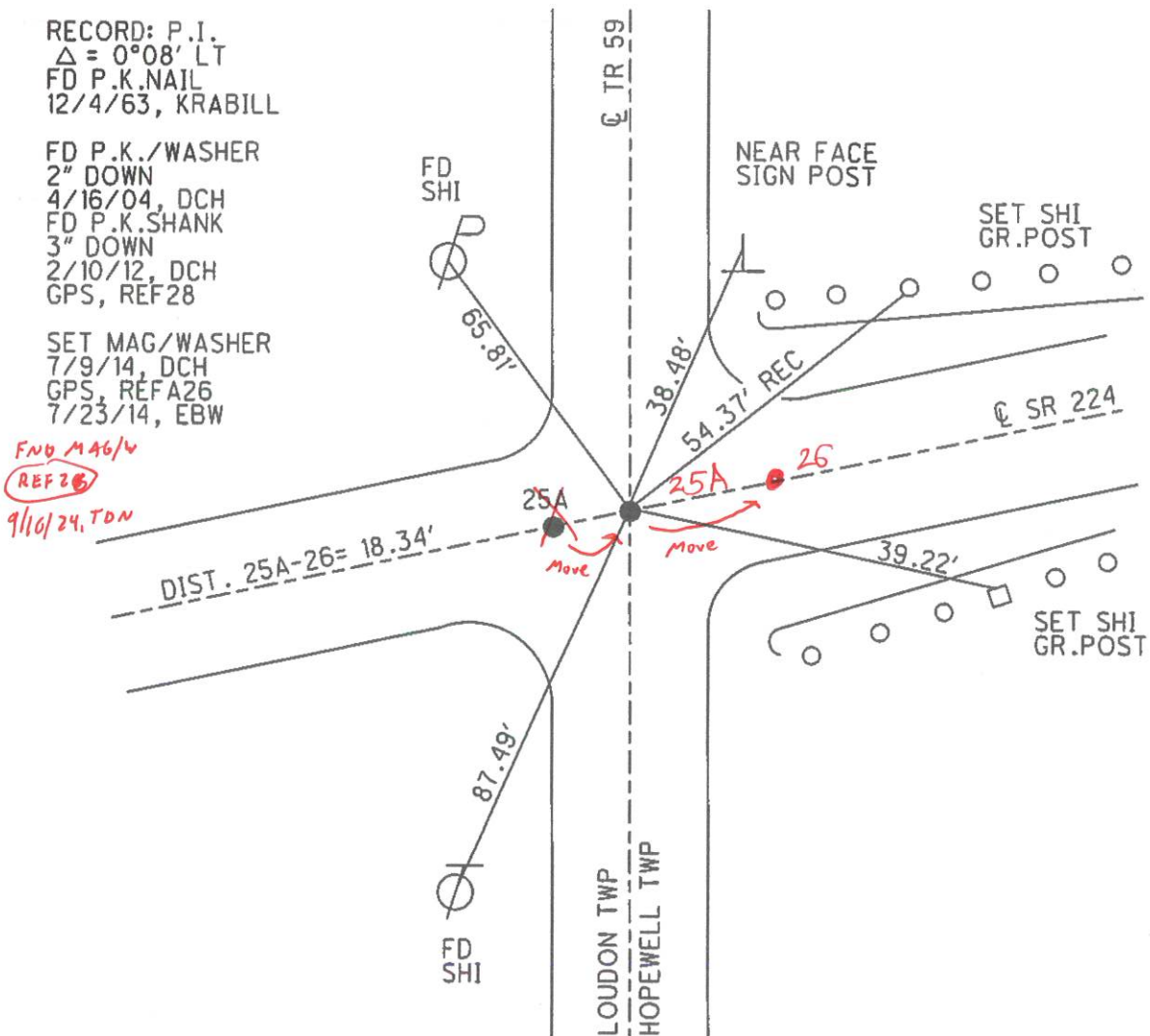
FD P.K./WASHER
2" DOWN
4/16/04, DCH
FD P.K.SHANK
3" DOWN
2/10/12, DCH
GPS, REF28

SET MAG/WASHER
7/9/14, DCH
GPS, REFA26
7/23/14, EBW

FNB M46/4

REF 26

9/16/24, TDN



O.D.O.T. DISTRICT 2 SURVEY OFFICE (USE ONLY)

PERSONNEL

REFERENCE NO.

27 A

SHEET

29

OF 39

NOTES

HOMAN

TDN

DATE

~~6/7/16~~ *7/10/24*

ROUTE

SR 224

H.C.

HOMAN

WEATHER

~~CLOUDY~~ *SUNNY*

COUNTY

SENECA

R.C.

ROUSOS

TEMP.

~~55°~~ *80°*

TOWNSHIP

HOPEWELL

TDN

SECTION

30

LSPC

T 2 N

R 14 E

TYPE MONUMENT

MAG ~~NAIL~~

ON SURFACE - ~~BELOW~~

ON ☒

LEFT - \odot PAV'T - RIGHT

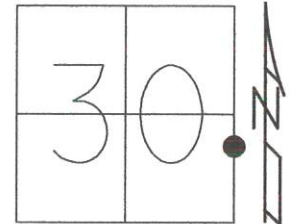
ON ☒

- TO - EDGE PAVEMENT

S.L.M. 380+56

Grid: Northing: 522939.273

Easting: 1751969.768



RECORD:

FD LG.R.R.SPIKE
4/16/04, DCH

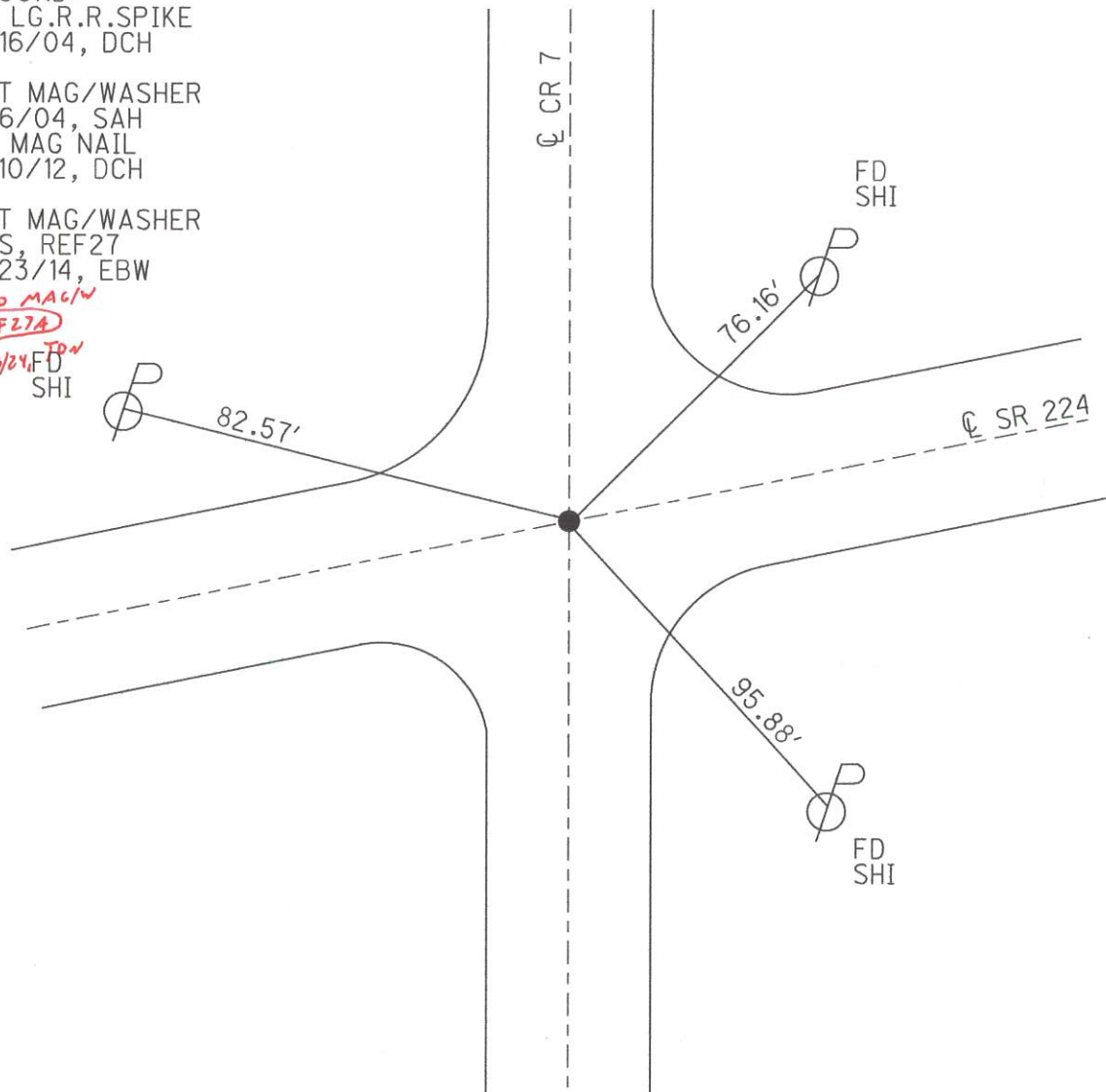
SET MAG/WASHER
8/6/04, SAH
FD MAG NAIL
2/10/12, DCH

SET MAG/WASHER
GPS, REF27
7/23/14, EBW

FND MAG/W

(REF27A)

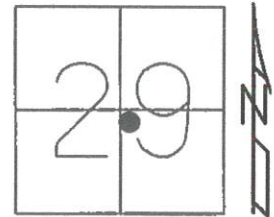
9/10/24 *TDN*
FD
SHI



O.D.O.T. DISTRICT 2 SURVEY OFFICE (USE ONLY)

PERSONNEL	REFERENCE NO. <u>29</u>	SHEET <u>31</u> OF <u>39</u>	
NOTES	HOMAN <u>TDN</u>	DATE <u>6/7/13</u> <u>9/10/24</u>	ROUTE <u>SR 224</u>
H.C.	HOMAN	WEATHER <u>CLOUDY SUNNY</u>	COUNTY <u>SENECA</u>
R.C.	ROUSOS	TEMP. <u>-55° 80°</u>	TOWNSHIP <u>HOPEWELL</u>
<u>GPS</u>	<u>TDN</u>		SECTION <u>29</u>
	<u>LSPC</u>		T <u>2</u> N R <u>14</u> E

TYPE MONUMENT MONBOX w/ 3/4" IPIN
 ON SURFACE - ~~BELOW~~ ON ✓
~~LEFT~~ - Q PAV'T - RIGHT 0.7' ✓
11.5' TO LT EDGE PAVEMENT
 S.L.M. 410+87



Grid: Northing: 523506.900 Easting: 1755033.997

RECORD: P.I.
 $\Delta = 0^\circ 13' RT$
 FD MONBOX
 4/16/04, DCH

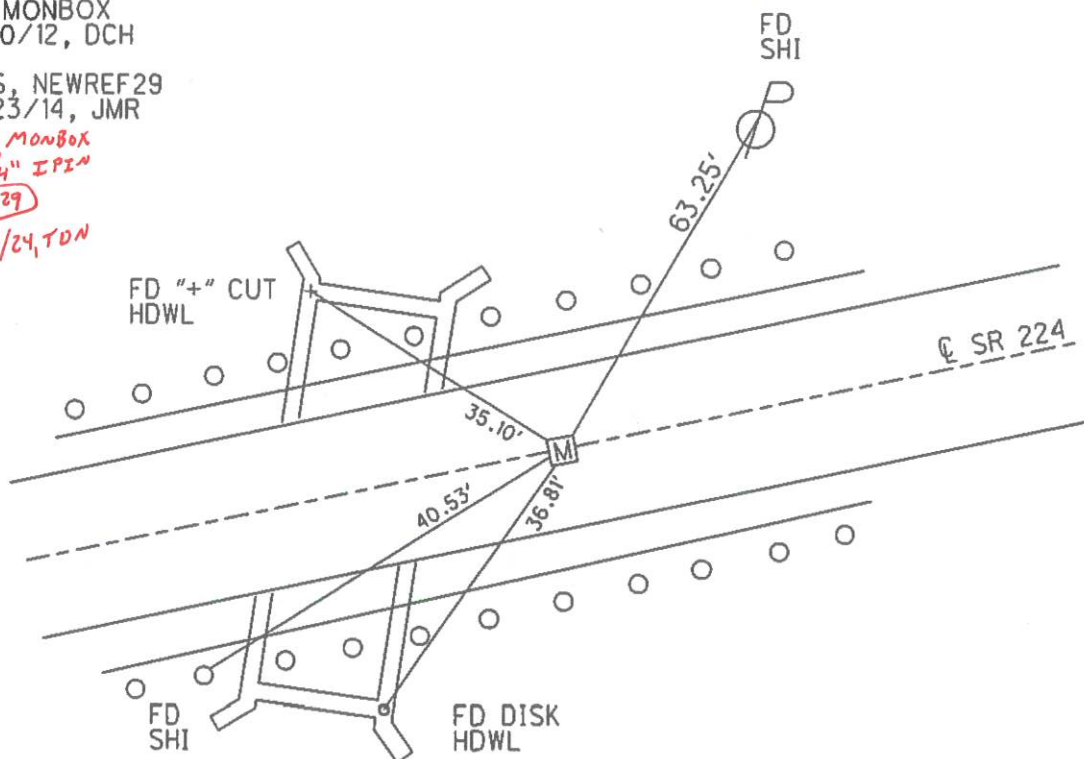
FD MONBOX
 2/10/12, DCH

GPS, NEWREF29
 7/23/14, JMR

FD MONBOX
w/ 3/4" IPIN

REF 29

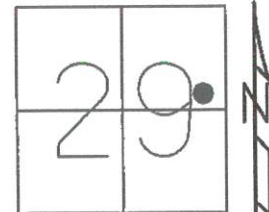
9/10/24, TDN



O.D.O.T. DISTRICT 2 SURVEY OFFICE (USE ONLY)

PERSONNEL _____ REFERENCE NO. 30 SHEET 32 OF 39
 NOTES HOMAN TON DATE 6/7/13 9/10/24 ROUTE SR 224
 H.C. HOMAN WEATHER CLOUDY SUNNY COUNTY SENECA
 R.C. ROUSOS TEMP. -55° 80° TOWNSHIP HOPEWELL
GPS TDN SECTION 29
LSPC T 2 N R 14 E

TYPE MONUMENT MAG NAIL ✓
 ON SURFACE - ~~BELOW~~ ON ✓
~~LEFT~~ - Q PAV'T - RIGHT 0.5' ✓
12.3' TO LT EDGE PAVEMENT
 S.L.M. 431+14

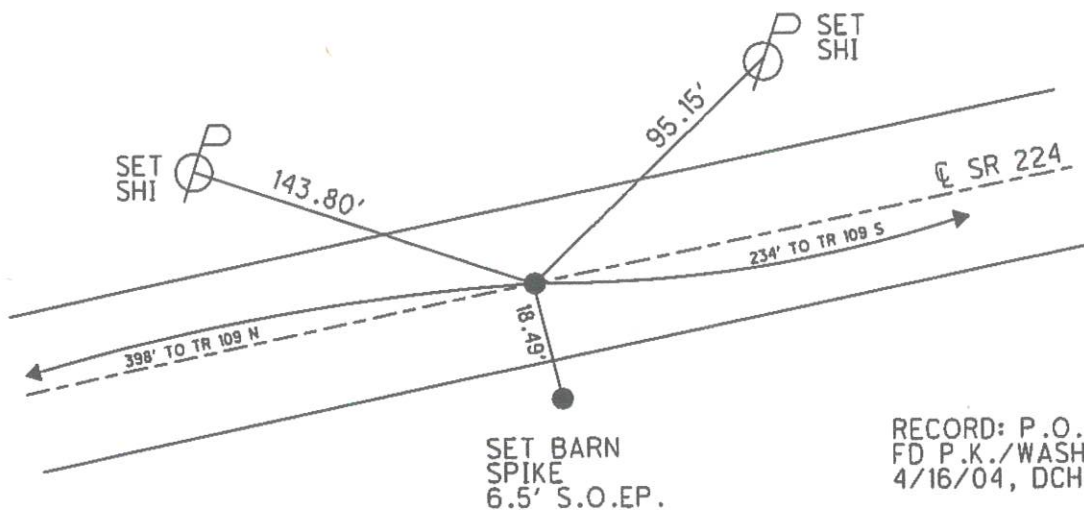


Grid: Northing: 523876.512 Easting: 1757020.150

FND MAG/W

REF30

9/10/24, TON



RECORD: P.O.T.
 FD P.K./WASHER
 4/16/04, DCH

SET MAG/WASHER
 7/1/04, RGN

FD MAG NAIL
 2/10/12, DCH

SET MAG/WASHER
 10/25/13, RGN

GPS, NEWREF30
 7/23/14, JMR

O.D.O.T. DISTRICT 2 SURVEY OFFICE (USE ONLY)

PERSONNEL

REFERENCE NO. 31

SHEET 33 OF 39

NOTES HOMAN TON

H.C. HOMAN

R.C. ROUSOS

GPS

TON
LSPC

DATE 6/7/13 9/11/24

WEATHER CLOUDY SUNNY

TEMP. .60°

ROUTE SR 224

COUNTY SENECA

TOWNSHIP HOPEWELL

SECTION 28

T 2 N R 14 E

TYPE MONUMENT MAG NAIL WASHER

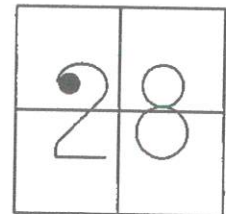
ON SURFACE - ~~BELOW~~ ON ✓

LEFT - Q PAV'T - RIGHT ON ✓

12.7' TO RT EDGE PAVEMENT

S.L.M. 447+08

Grid: Northing: 524167.824 Easting: 1758588.523

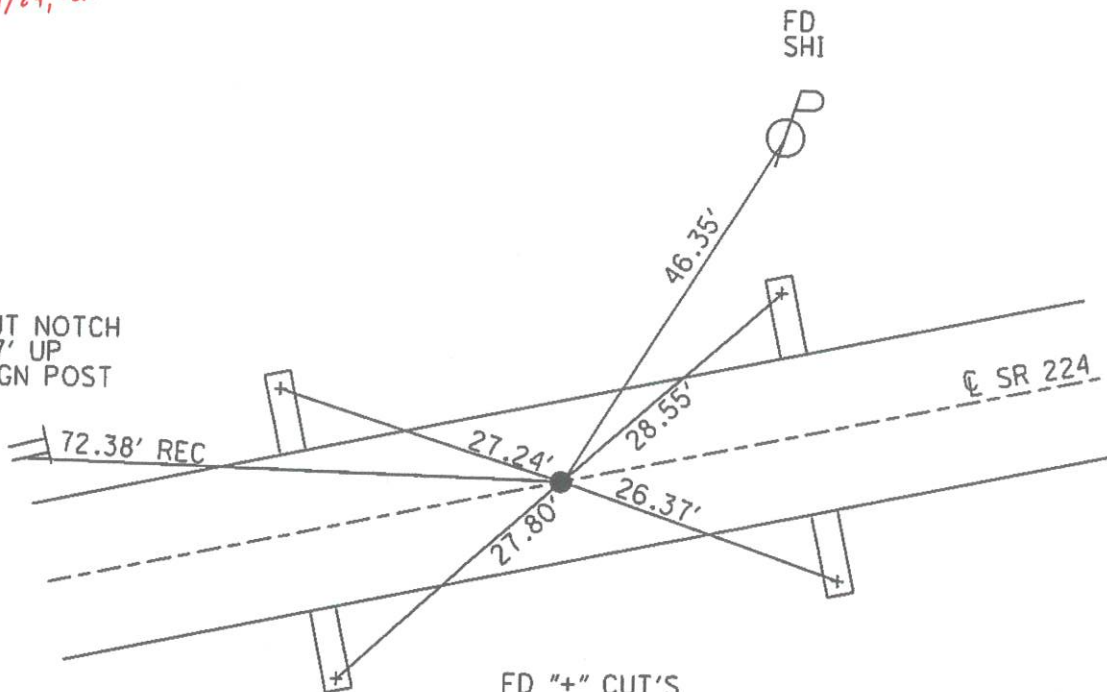


FND MAG/W

REF31

9/11/24, TON

CUT NOTCH
1.7' UP
SIGN POST



FD "+" CUT'S
IN ALL HDWL'S

RECORD: P.I.
 $\Delta = 0^{\circ}18'$ RT
P.K./WASHER
4/16/04, DCH
SET MAG/WASHER
8/7/04, SAH

FD MAG NAIL
2/10/12
SET MAG/WASHER
7/9/14, DCH
GPS, NEWREF31
7/23/14, JMR

O.D.O.T. DISTRICT 2 SURVEY OFFICE (USE ONLY)

PERSONNEL

REFERENCE NO. 32

SHEET 34 OF 39

NOTES HOMAN *TDN*

H.C. HOMAN

R.C. ROUSOS

GPS

TDN

LSPC

DATE 6/7/13 *9/11/24*

WEATHER CLOUDY SUNNY

TEMP. 60° ✓

ROUTE SR 224

COUNTY SENECA

TOWNSHIP HOPEWELL

SECTION 28

T 2 N R 14 E

TYPE MONUMENT MAGWASHER ✓

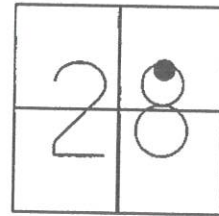
ON SURFACE - ~~BELOW~~ ON ✓

~~LEFT~~ - Q PAV'T - RIGHT 0.5' ✓

12.7' TO RT EDGE PAVEMENT

S.L.M. 466+20

Grid: Northing: 524505.015 Easting: 1760464.012



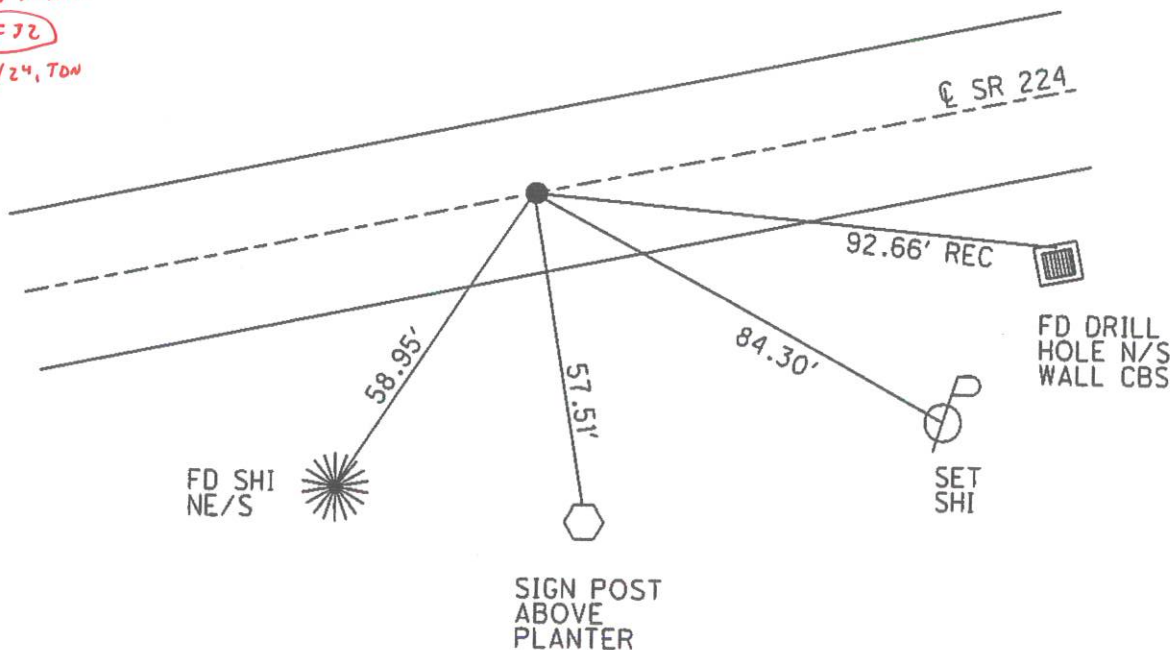
RECORD: P.I.
 $\Delta = 0^\circ 01' RT$
 P.K./WASHER
 4/23/04, DCH
 SET MAG/WASHER
 7/1/04, RGN

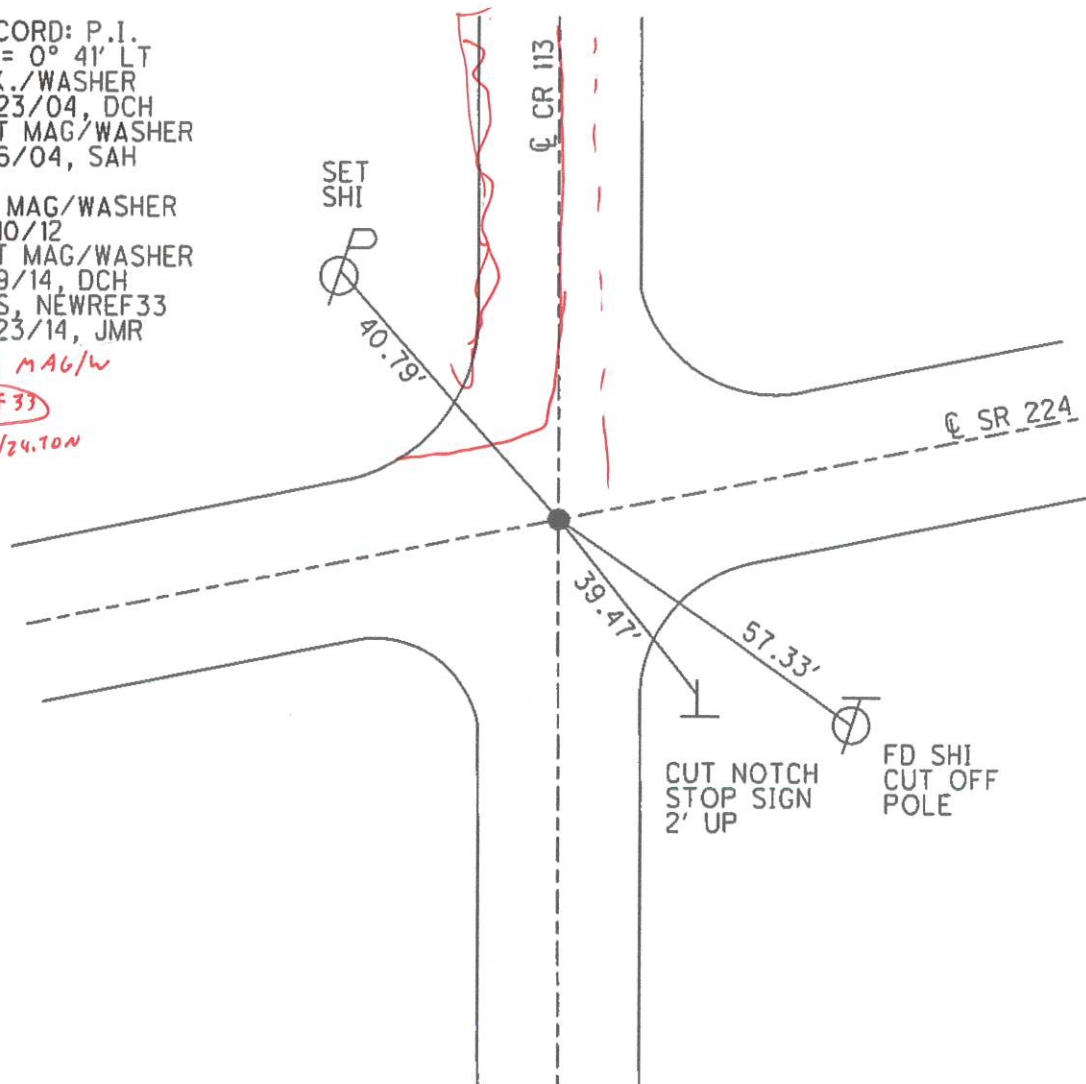
FD MAG/WASHER
 2/10/12
 SET MAG/WASHER
 7/9/14, DCH
 GPS, NEWREF32
 7/23/14, JMR

FND MAG/W

REF 72

9/11/24, TDN





O.D.O.T. DISTRICT 2 SURVEY OFFICE (USE ONLY)

PERSONNEL

REFERENCE NO. 34

SHEET 36 OF 39

NOTES HOMAN TON

H.C. HOMAN

R.C. ROUSOS

GPS TON

LSPC

DATE 6/7/13 9/11/24

WEATHER CLOUDY Sunny

TEMP. 60°

ROUTE SR 224

COUNTY SENECA

TOWNSHIP LOUDON

SECTION 27

T 2 N R 14 E

TYPE MONUMENT MAG NAIL/WASHER

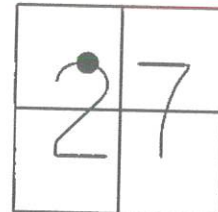
ON SURFACE - ~~BELOW~~ ON ✓

LEFT - Q PAV'T - ~~RIGHT~~ 1.0' ✓

13.0' TO RT EDGE PAVEMENT

S.L.M. -503+90 (505+43 Roughly)

Grid: Northing: 525204.512 Easting: 1764252.475



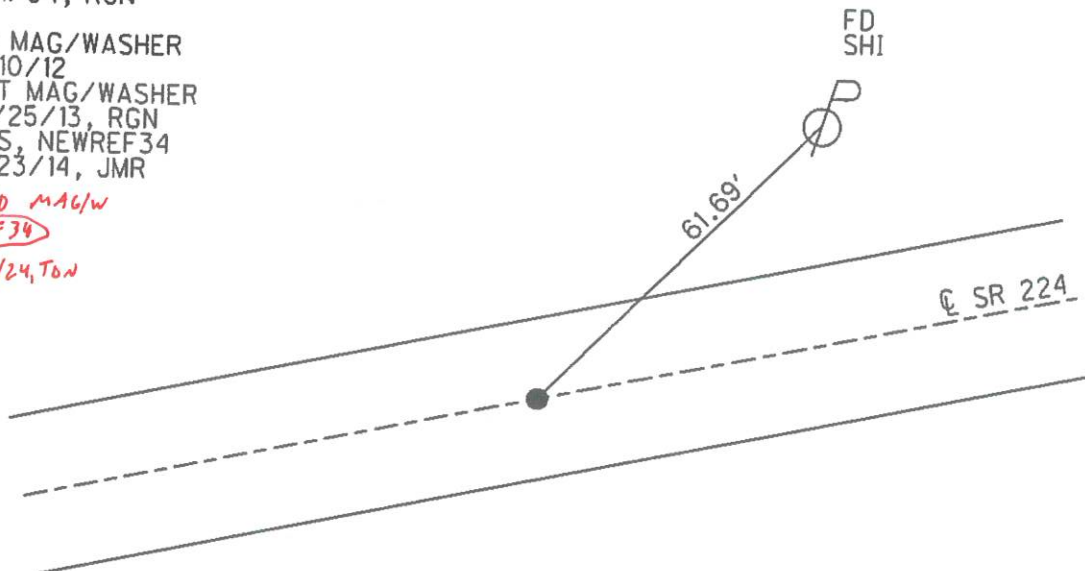
RECORD: P.I.
 $\Delta = 0^\circ 39' \text{ RT}$
 P.K./WASHER
 5/20/04, DCH
 SET MAG/WASHER
 7/1/04, RGN

FD MAG/WASHER
 2/10/12
 SET MAG/WASHER
 10/25/13, RGN
 GPS, NEWREF34
 7/23/14, JMR

END MAG/W

REF34

9/11/24, TON



O.D.O.T. DISTRICT 2 SURVEY OFFICE (USE ONLY)

PERSONNEL

NOTES HOMAN TON
H.C. HOMAN
R.C. ROUSOS
GPS
TDN
LSPC

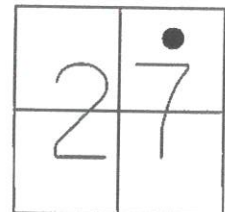
REFERENCE NO. 35

DATE 6/7/13 9/11/24
WEATHER CLOUDY SUNNY
TEMP. 60° 62°

SHEET 37 OF 39
ROUTE SR 224
COUNTY SENECA
TOWNSHIP HOPEWELL
SECTION 27
T 2 N R 14 E

TYPE MONUMENT MAG/WASHER ✓
ON SURFACE - ~~BELOW~~ ON ✓
~~LEFT~~ - Q PAV'T - RIGHT 0.3' ✓
TO - EDGE PAVEMENT
S.L.M. -527+42

Grid: Northing: 525619.756 Easting: 1766563.456



RECORD: P.I.
 $\Delta = 0^{\circ}35' \text{ LT}$
P.K./WASHER
4/22/04, DCH
SET MAG/WASHER
7/1/04, RGN

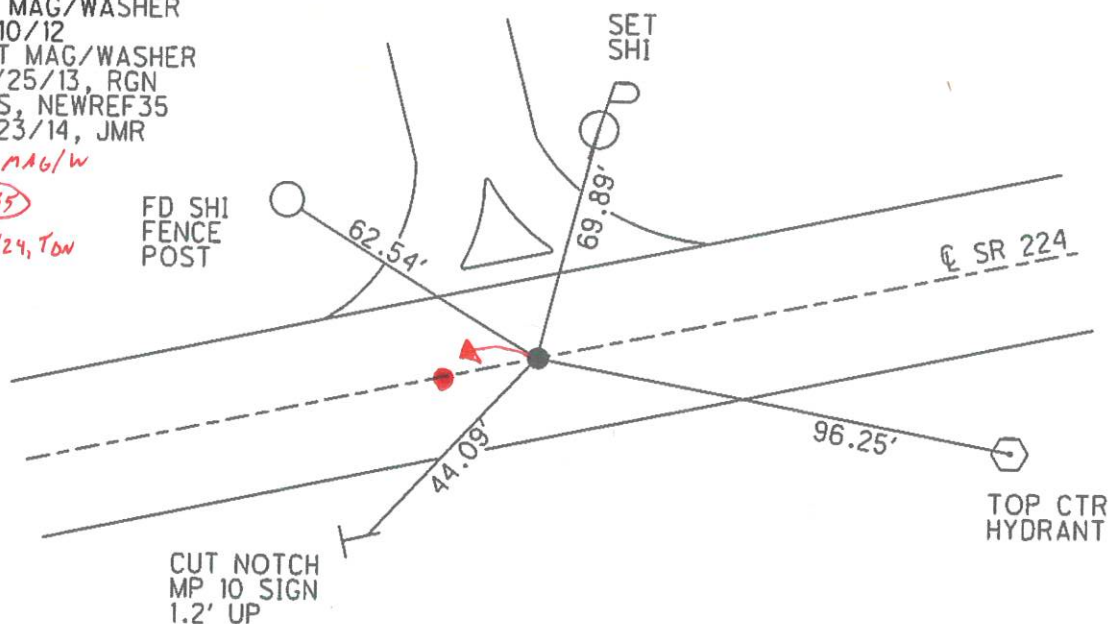
FD MAG/WASHER
2/10/12
SET MAG/WASHER
10/25/13, RGN
GPS, NEWREF35
7/23/14, JMR

FND MAG/W

REF35

9/11/24, TON

FD SHI
FENCE
POST

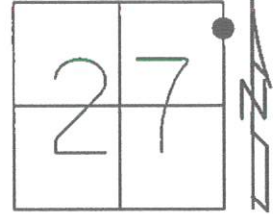


O.D.O.T. DISTRICT 2 SURVEY OFFICE (USE ONLY)

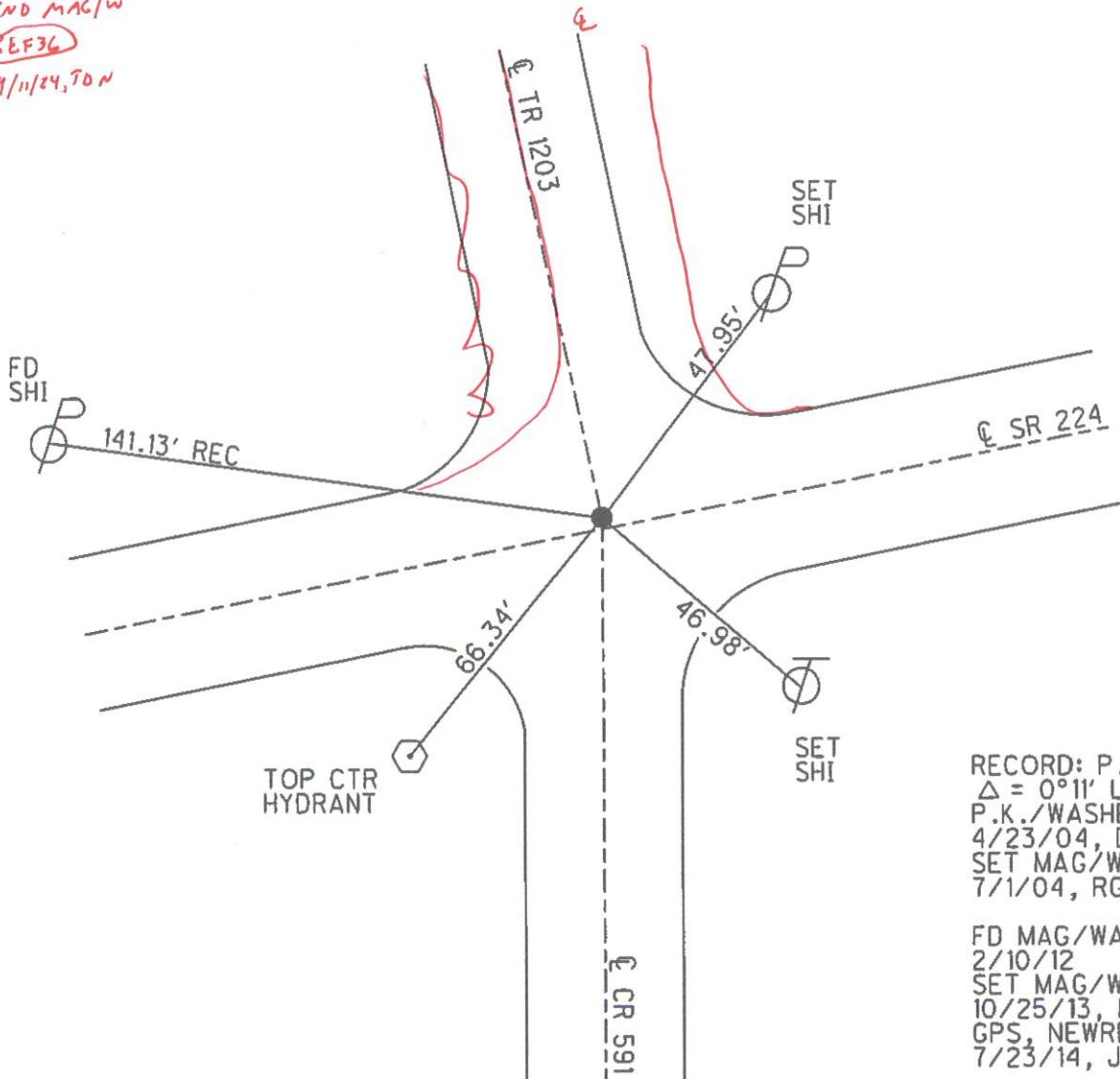
PERSONNEL		REFERENCE NO.	36	SHEET	38	OF	39
NOTES	HOMAN <i>Ton</i>	DATE	6/7/13 <i>9/11/24</i>	ROUTE	SR 224		
H.C.	HOMAN	WEATHER	CLOUDY <i>SUNNY</i>	COUNTY	SENECA		
R.C.	ROUSOS	TEMP.	50° <i>70°</i>	TOWNSHIP	HOPEWELL		
<i>GPS</i>	<i>Ton</i>			SECTION	27		
	<i>LSPC</i>			T	2	N	R 14 E

TYPE MONUMENT MAG/WASHER ✓
ON SURFACE - ~~BELOW~~ ON ✓
LEFT - C PAV'T - ~~RIGHT~~ 1.0' ON ✓
11.5' TO LT EDGE PAVEMENT
S.L.M. 540+67.2

Grid: Northing: 525863.973 Easting: 1767828.583



FND MAG/W
REF36
9/11/24, TON



RECORD: P.1.
 $\Delta = 0^{\circ}11' \text{ LT}$
P.K./WASHER
4/23/04, DCH
SET MAG/WASHER
7/1/04, RGN

FD MAG/WASHER
2/10/12
SET MAG/WASHER
10/25/13, RGN
GPS, NEWREF36
7/23/14, JMR

O.D.O.T. DISTRICT 2 SURVEY OFFICE (USE ONLY)

PERSONNEL

REFERENCE NO.

36 A

SHEET

39

OF 39

NOTES HOMAN TDN

H.C. HOMAN

R.C. ROUSOS

GPS

TDN

LSPC

DATE

6/7/13 9/11/24

WEATHER

CLOUDY SUNNY

TEMP.

-60° 70°

ROUTE

SR 224

COUNTY

SENECA

TOWNSHIP

HOPEWELL

SECTION

26

T 2 N R 14 E

TYPE MONUMENT MAG/WASHER ✓

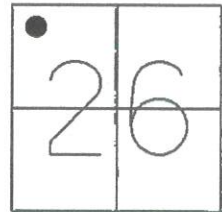
ON SURFACE - ~~BELOW~~ ON ✓

LEFT - Q PAV'T - RIGHT ON 0.5'

12' TO RT EDGE PAVEMENT

S.L.M. 550+14.2

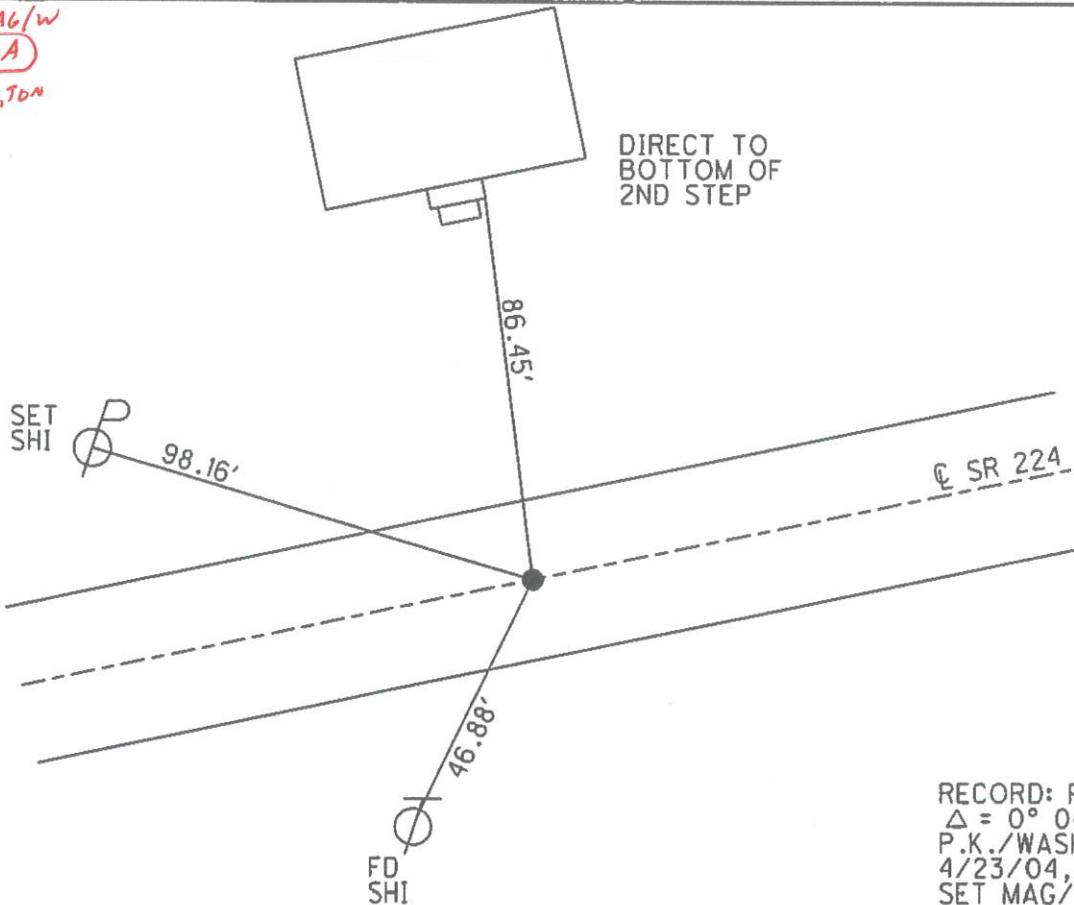
Grid: Northing: 526042.910 Easting: 1768770.974



FND MAG/W

REF 36A

9/11/24, TDN



RECORD: P.I.
 $\Delta = 0^\circ 04' \text{ RT}$
 P.K./WASHER
 4/23/04, DCH
 SET MAG/WASHER
 8/6/04, SAH

FD MAG/WASHER
 2/10/12
 SET MAG/WASHER
 10/25/13, RGN
 GPS, NEWREFA36
 7/23/14, JMR

O.D.O.T. DISTRICT 2 SURVEY OFFICE (USE ONLY)

PERSONNEL

REFERENCE NO. 37

SHEET 1 OF 12

NOTES ASTON

DATE 9/14/23

ROUTE US 224

H.C. NIESE

WEATHER SUNNY

COUNTY SENECA

R.C. ASTON

TEMP. 70°

TOWNSHIP HOPEWELL

SECTION 26

DWG BY RHOADES PID R/W

T 2 N R 14 E

TYPE MONUMENT MON BOX W/ 1" IPIN

ON SURFACE - ~~BELOW~~ ON

OFFSET Q PAVEMENT ON LT : RT

- TO - EDGE PAVEMENT

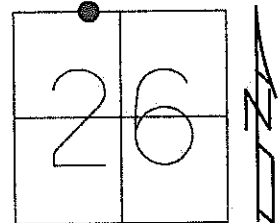
STATION: 597+69.6

HORIZ.DATUM: NAD83 (2011)

GEOID: NAVD88 2018

GRID: NORTHING: 526252.172

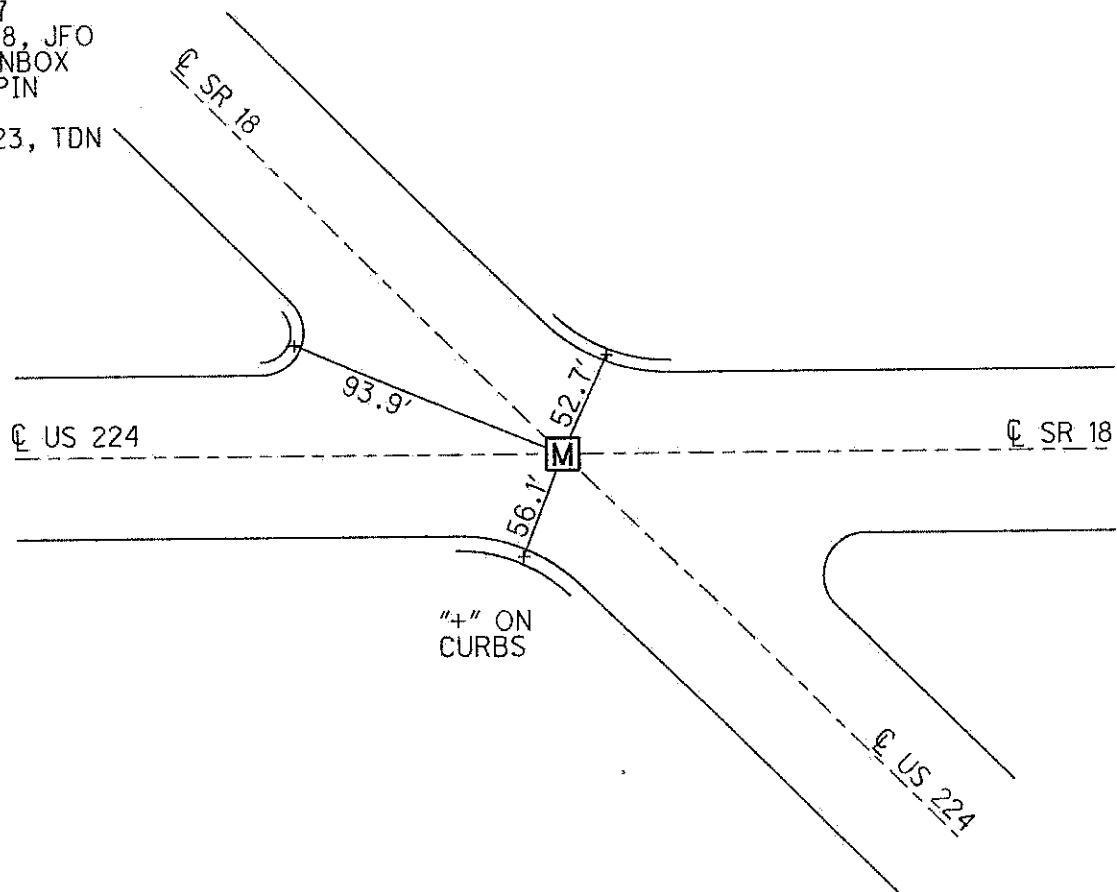
EASTING: 1769858.373



RECORD: P.I.
FD MONBOX
11/5/91, CHENEY
FD MONBOX
W/ 1" IPIN
REF37
6-13-17
12-17-18, JFO
FD MONBOX
W/1" IPIN
REF37
9/14/23, TDN

NOTE: REF42B SR 18

SENECA LDP:
N: 294888.904
E: 144511.264



O.D.O.T. DISTRICT 2 SURVEY OFFICE (USE ONLY)

PERSONNEL

REFERENCE NO. 38

SHEET 2 OF 12

NOTES ASTON

DATE 9/14/23

ROUTE US 224

H.C. NIESE

WEATHER SUNNY

COUNTY SENECA

R.C. ASTON

TEMP. 70°

TOWNSHIP HOPEWELL

SECTION 26

DWG BY RHOADES PID R/W

T 2 N R 14 E

TYPE MONUMENT MAG/WASHER

ON SURFACE - ~~BELOW~~ ON

OFFSET 0.4' ~~LT~~ : RT

11.4' TO RT EDGE PAVEMENT

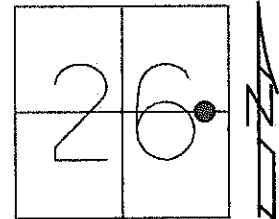
STATION: 600+17

HORZ.DATUM: NAD83 (2011)

GEOID: NAVD88 2018

GRID: NORTHING: 523685.346

EASTING: 1772691.066



SENECA LDP: SENECA LDP:
REF37A REF38
N: 292502.160 N: 292343.101
E: 147185.116 E: 147363.292

RECORD:
STA. 58+22
FD P.K./WASHER
4-26-04, DCH
SET MAG/WASHER
8-17-04, MB
FD MAG/WASHER
REF38
5-30-17, JFO
SET MAG/WASHER
W/COORD.
12-17-18, JFO
FD MAG/WASHER
REF38
9/14/23, TDN

